



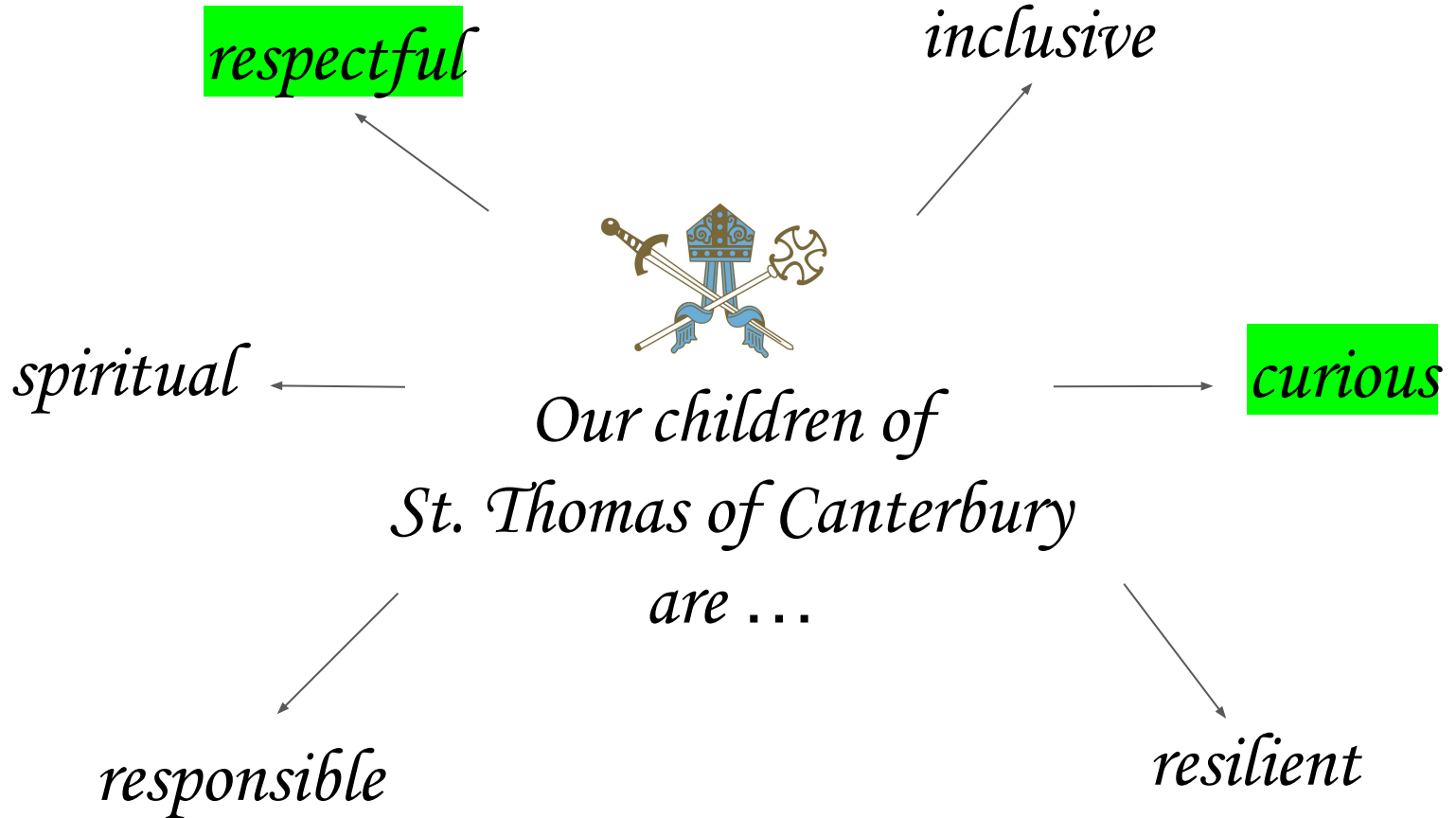
St Thomas of Canterbury Catholic Primary School

Year 1
Parent Information

January 2026



Our School Values





The Year 1 Team

- ❑ **Miss K Theakston** - Year Group Leader & Class 1T teacher
- ❑ **Mrs C Gough** - Class 1G teacher
- ❑ **Mrs A Venables/Mrs S Coppin** - Class 1VC teachers
- ❑ **Mrs C Auvache** - HLTA
- ❑ **Mrs A Jachym, Mrs R Sutiene** - Year 1 support staff

- ❑ **Miss S Pellat** - SENCo
- ❑ **Mrs M Cuff** - Inclusion Manager





1

Your child's Class Teacher knows them best so should be the first point of contact. From 8:40am staff are working with children, so please speak to the teacher at the end of the school day.



2

If you have a further query, make an appointment to speak to the Year Group Leader.



3

Call the school office who may be able to answer your question immediately or pass a message to the relevant member of staff.
01375 375826

Communicating with the school

Email or call the school office to request to meet with a member of staff.
admin@stthomasofcanterbury.thurrock.sch.uk

Talk with any of our Senior Leaders:
Mrs Coppin
Mrs Smith
Ms McAnally

Send in a note with your child.

Speak with the staff on the school gate at the beginning or the end of the day.

Email the class teacher.

Or the Headteacher
Mrs Poulteney





Attendance and Punctuality



It's fine to send your child to school with a minor cough or runny nose. If they are unwell during the day, we will call you to collect your child.

Punctuality

8:40 - School gates open.

8:55 - The school day begins.

All children should be seated in class by this time.

3:10 - Parents arrive to collect.

3:15 - School day finishes.

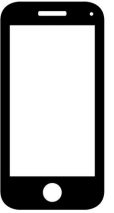


Absence Procedures

If your child is absent for any reason, you should contact the school office by telephone before 9:00am on the first day of absence. You will be expected to provide an explanation for the absence and an estimate of how long the absence will last, e.g. one school day.

UNAUTHORISED ABSENCE

Where a pupil reaches the national threshold of 10 sessions (equivalent to 5 school days) of unauthorised absence in a rolling period of 10 school weeks, the school will consider whether a penalty notice is appropriate. Each case will be considered individually to determine whether a penalty notice or another tool or legal intervention should be used to improve attendance.



A fixed penalty notice will be applied for in line with the LA's code of conduct and the DfE's 'Working together to improve school attendance' guidance.

Penalty notices for unauthorised absences will be charged at £160, reduced to £80 if paid within 21 days.

Where attendance still does not improve following a fixed penalty notice, the school will work with the LA to take forward attendance prosecution as a last resort.





Uniform - Spring term

BOYS

- White shirt
- School tie
- Grey V-necked jumper (preferably with the school logo)
- Grey trousers
- Grey socks
- Black shoes (not trainers)
- St Thomas's School blazer (optional)



GIRLS

- White shirt or blouse
- School tie
- Grey V-necked cardigan (preferably with the school logo)
- Grey skirt or pinafore
- Grey socks / tights
- Black shoes (not trainers)
- St Thomas's School blazer (optional)



COATS SHOULD BE BLACK OR NAVY. CHILDREN SHOULD HAVE A ST THOMAS'S BOOK BAG.



PE kit

REMINDER

Year 1's PE day is Friday.

Your child should wear their PE kit to school on their PE day.



Children should wear their school tracksuit for PE during the Spring term.

If the weather is warm towards the Easter break, they can wear their blue T-shirt and red shorts.

Any child without a school tracksuit should wear a plain dark coloured tracksuit instead.

No earrings to be worn on PE days.

Children should wear black plimsolls or plain black trainers on their PE days.



Information about all school uniform can be found on the school website:

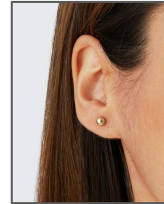
<https://www.stthomasofcanterbury.thurrock.sch.uk/page/?title=Uniform&pid=1831>





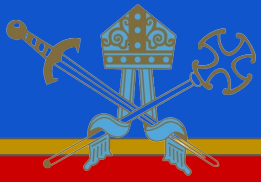
Hair/Accessories

- Hair accessories must be kept to a minimum and should be in school colours
- Hair braids should be natural hair colours.
- One small stud earring per ear.
(Children must not wear earrings on PE days.)



Please ensure that all your child's clothing is marked with his/her name.
We are not responsible for items of clothing which go missing.

Lost property is located in a black box outside of the main office.



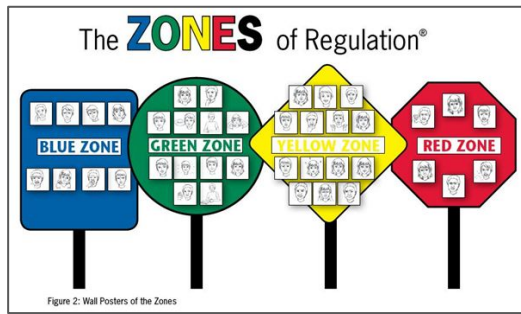
Behaviour

Expectations

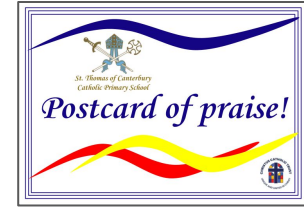
We believe that, in order to facilitate teaching and learning, acceptable behaviour must be demonstrated in all aspects of school life. The school is committed to:

- Promoting desired behaviour.
- Promoting self-esteem, self-discipline, proper regard for authority, and positive relationships based on mutual respect.
- Ensuring equality and fair treatment for all.
- Praising and rewarding good behaviour.
- Challenging and educating misbehaviour.
- Providing a safe environment free from disruption, violence, discrimination, bullying and any form of harassment.
- Encouraging positive relationships with parents.
- Developing positive relationships with pupils to enable early intervention.
- A shared approach which involves pupils in the implementation of the school's policy and associated procedures.
- Promoting a culture of praise and encouragement in which all pupils can achieve.





Zones of Regulation



We believe in a preventative approach, where children are treated with respect and where sanctions, when applied, are consistent.

Rewards for good behaviour at St Thomas's include:

- Verbal praise
- Communicating praise to parents
- House Points and stickers
- Certificates linked to our school values
- Prize ceremonies and special assemblies





Introducing Miss Pellat, our SENCO



Hello, my name is Miss Pellat and I have been working at St. Thomas' since April 2025. I have been teaching in England for more than 20 years and I have successfully completed my National Award for SEN Coordination in 2017. I have a passion for supporting all children to access the curriculum and to make progress, promoting Inclusion and ensuring they have the right support in place when needed.

I am here to provide a link between home and school, supporting you with:

- discussing concerns and identifying and assessing your child's needs
- developing and implementing a support plan with class teacher's input
 - meeting and reviewing annually your child's EHCP
 - providing guidance and support about SEN
- coordinating with external agencies and making referrals when necessary.

Please feel free to approach me if you see me around school or liaise with the class teacher. You can phone or email the office to arrange a suitable time to meet:

admin@stthomasofcanterbury.thurrock.sch.uk 01375 375826

I look forward to working with you!



Introducing Mrs Cuff, our Inclusion Manager



Hello, my name is Mrs Cuff and I have been working at St. Thomas' since September 2024. Previously I worked for Treetops School as a classroom Instructor. I have worked with children with varied Special Educational Needs in all key stages, for 18 years. I have a passion for supporting children reach their full potential.

I am here to lead and manage the school SEN provision working with staff, parents and external agencies to create a welcoming and effective learning environment for all. Providing tailored support and creating an inclusive learning environment.

Please feel free to approach me if you see me around school, alternatively you can email me to arrange a suitable time to meet.

Please email mcuff@stthomasofcanterbury.thurrock.sch.uk or telephone the school office on 01375 375826 or speak with the class teacher.

I look forward to working with you!



Introducing Miss Pritchard, our Family Support Officer

Hello, my name is Miss Pritchard and I have been working at St. Thomas' for 5 years. Previously I worked with the local Family Hub, supporting parents in their home environment to help settle their child and prepare them for school. I am passionate about helping every child thrive by supporting families with practical strategies and guidance. My role is to provide a strong link between home and school, working closely with you to support your child's development and wellbeing.

Some of the areas I can support you with include:

- Bedtime routines
- Setting boundaries
- Healthy eating

Please feel free to approach me if you see me around school, alternatively you can email me to arrange a suitable time to meet.

Please email cpritchard@stthomasofcanterbury.thurrock.sch.uk or telephone the school office on 01375 375826. Alternatively speak to your child's class teacher.

I look forward to working with you and your family!





Introducing Miss Judd, our Safeguarding Officer

Hello, my name is Miss Judd and I joined St Thomas's school community in September 2025. Previously I worked for Hassenbrook as a pastoral support manager, providing support to both students and parents/carers on a daily basis.

I am here to provide a link between home and school, supporting you with strategies such as:

- Bedtime routines
- Setting boundaries
- Healthy eating

Please feel free to approach me if you see me around school, alternatively you can email me to arrange a suitable time to meet.

Please email njudd@stthomasofcanterbury.thurrock.sch.uk or telephone the school office on 01375375826 or speak with the class teacher.

I look forward to working with you!



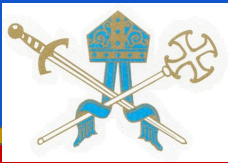


Religious Education

Some parents have asked for more information on what Religious Education consists of at STOC.

Christ is at the centre of everything we do in school, as a Catholic School we;

- pray together at the start of the school day, before and after lunch and at the end of the day
- come together weekly for Celebration of the Word led by a member of staff
- share in class-led Celebrations of the Word over the academic year
- sing and learn new hymns in our musical celebration of the word
- provide children with the opportunity to lead on collective worship within the class based around Scripture
- offer opportunities for spontaneous prayer with prayer areas around the school
- share Advent and Lent bags with families so they can celebrate at home too
- have Faith Councillors in every class
- celebrate both Mass and other services such as Ash Wednesday
- invite Fr Paschal to come in and talk classes in different year groups about topics they are studying
- portray the Nativity and Easter Passion with performances in school for the community
- support the community and fundraise for charities, donating to food banks and clothes banks.



Our learning this term - Religious Education

2 RE lessons per week

Spring Term - themes and topics

In *Galilee to Jerusalem*, Year 1 children learn about belonging to the Church and how we live as members of God's family

In *Desert to Garden*, children learn about prayer and how we talk and listen to God.



- Celebration of the Word
- Musical Celebration of the Word

Mass is celebrated regularly at school and church for the whole school and individual year groups. All parents welcome to attend.

We learn, achieve and love following Jesus.





Phonics

At our school, we follow the Read Write Inc. (RWI) phonics programme, and all children take part in daily phonics lessons to support their reading development.

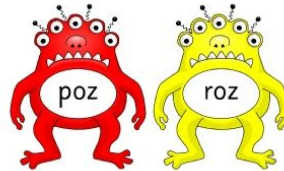
In June 2026, children currently in Year 1 will take the statutory **Phonics Screening Check**. This is a short assessment where children are asked to read 40 words, using their phonics knowledge to decode them.

The check includes a mix of real words and *Alien words*. These made-up words are included to assess whether children can apply their decoding skills to unfamiliar words, rather than relying on memory.

Reading RWI phonics books at home plays a vital role in helping children practise the sounds they are learning in school. Your support with reading at home makes a big difference in building your child's confidence and fluency.

If you have any questions about phonics or the screening check, please don't hesitate to speak to us.

There will be a Parent Meeting on **Thursday 29th January 2026 at 2:40pm in the School Hall** to discuss this further with you.

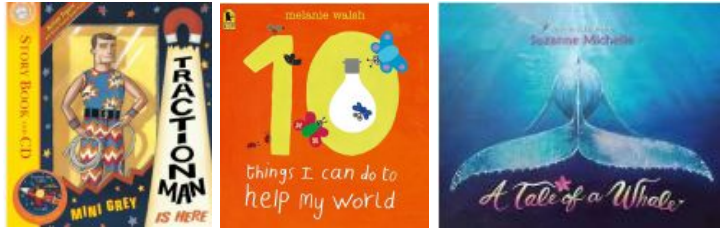




Our learning this term

Throughout the Spring term, this is what we will be covering:

English:



We will be looking at forming sentences with capital letters and full stops. We will also be introducing exclamation marks and question marks within our writing.

Maths:

Spring	
6	Time
7	Exploring calculation strategies within 20
8	Numbers to 50
9	Addition and subtraction within 20
10	Fractions
11	Measures: Length and mass

Science: Animals including humans - focusing on minibeasts and animals around us.



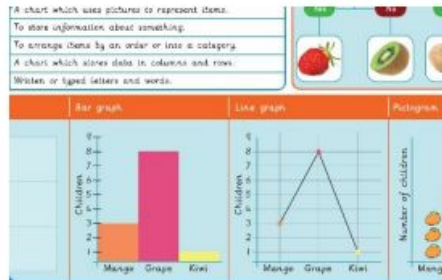


Our learning this term

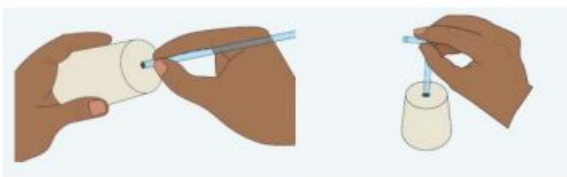
Computing: Digital imagery



Data Handling:



Design & Technology: Windmills



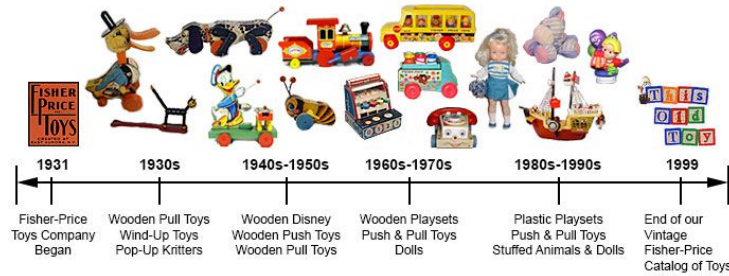
Art: Painting and Mixed Media - Colour Splash!





Our learning this term

History: How have toys changed? We discuss different toys and look at how toys have changed over different time periods.



Geography: What is the weather like in the UK? We look and compare the different types of weather experienced in the UK.



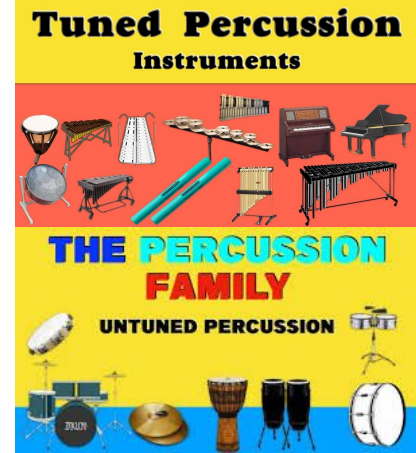


Our learning this term

Music:

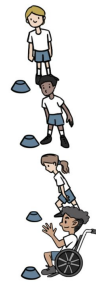
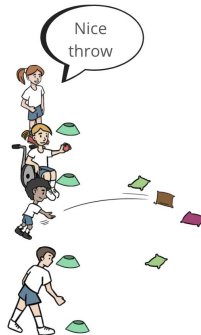
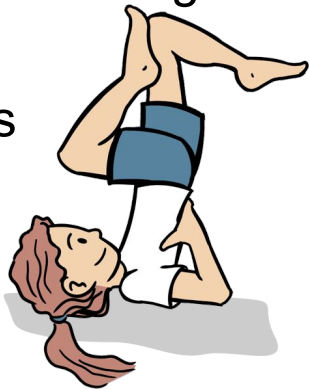
Exploring Music Notation With Untuned Percussion Instruments

Exploring Music Notation With Tuned Percussion Instruments



PE:

- Sending and receiving
- Gymnastics
- Target Games
- Fitness





Reading

Becoming a fluent, skilled and attentive reader starts at the earliest stages. Therefore, making sure that children become engaged with reading at the earliest opportunity is one of the most important ways to make a difference to their life chances.



Books are changed weekly. Please listen to your child read every day and and leave a comment in his/her reading record.





Homework

- Homework will be given out on a Friday. It will be placed into your child's homework folder in their book bag. **Please ensure that homework is completed and returned on a Tuesday.**
- Alongside the homework, please ensure that your child is reading at least 5 times a week and that you are signing their reading books to reflect this. The children should regularly be practising the sounds in their Phonics book in order for them to become a more confident reader. Children are rewarded when they have read their Phonics book 5 times in a week.





Forest School



Forest School is a fun and adventurous way for children to learn outdoors. It helps build confidence, teamwork and problem-solving skills while letting children explore nature. Pupils will learn how to use tools safely, care for the environment, and, most importantly, have lots of fun, including fire safety and even enjoy some outdoor cooking in a safe, controlled environment.

During the year, each class will have a series of sessions, led by a qualified Forest School coordinator, during school hours at a scheduled time each Friday, in our dedicated Forest School outdoor learning area. Your child needs to wear their school PE kit for the duration of the sessions. Since Forest School happens in all weather (unless it is extremely windy or icy), please make sure your child has:

- PE kit tracksuit with long trousers and jumper or PE jacket
- A waterproof coat for rainy days and warmer coat in winter
- School jumper can be worn for extra layers in winter
- Trainers (wellies or boots on rainy days*)



* As our Forest School area is quite sheltered, trainers will be suitable to be worn most of the time, however school staff will always notify parents in advance if wellies or boots are needed for particularly wet weather.



Educational Visits

In Spring 2, we will visit Colchester Zoo to observe animals and take part in an art workshop, where we will explore patterns and texture in art, more details to follow.



Please note that if we do not receive sufficient contributions towards educational visits, then they may have to be cancelled. Payments are made via Arbor.

Consent must be given for every child before we can allow them to participate. Verbal consent is **not** accepted for children to take part in any activity.





After school clubs

We are delighted to offer a wide range of after-school clubs this academic year, details of which are sent out at the beginning of each term.

Parents/carers can also access Jules et Lis before and after school clubs, run by an external provider. Details can be found on <https://julesetlis.co.uk/>





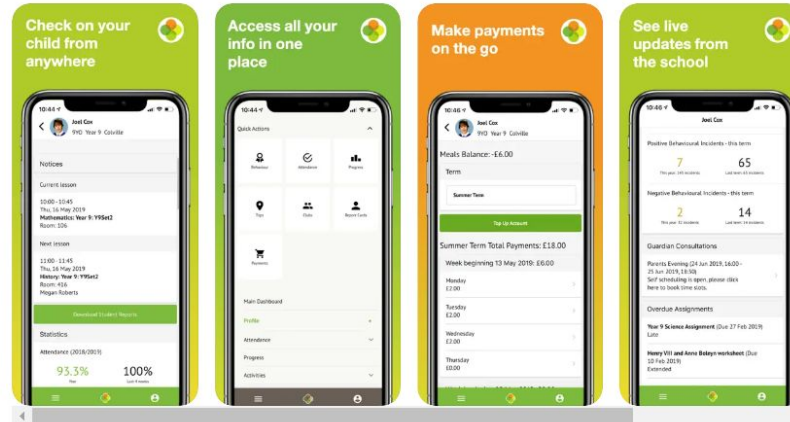
Arbor

All correspondence, payments, club bookings and consent for trips will be sent electronically through Arbor.



Arbor 12+
Parent & Guardian Portal
Arbor Education Partners
Designed for iPhone
#17 in Education
★ ★ ★ ★ 1.4 + 761 Ratings
Free

iPhone Screenshots





Dates for your diary



St Thomas of Canterbury Catholic Primary School
Term Dates Academic Year 2025-2026



September 2025							October 2025							November 2025							December 2025						
M	T	W	T	F	S	S	M	T	W	T	F	S	S	M	T	W	T	F	S	S	M	T	W	T	F	S	S
									1	2	3	4	5	6	7	8	9	10	11	12	13	14	15	16	17	18	19
20	21	22	23	24	25	26	27	28	29	30	31			1	2	3	4	5	6	7	8	9	10	11	12	13	14
15	16	17	18	19	20	21	22	23	24	25	26	27	28	29	30	31					1	2	3	4	5	6	7
22	23	24	25	26	27	28	29	30	31					1	2	3	4	5	6	7	8	9	10	11	12	13	14
29	30																										

January 2026							February 2026							March 2026							April 2026						
M	T	W	T	F	S	S	M	T	W	T	F	S	S	M	T	W	T	F	S	S	M	T	W	T	F	S	S
1	2	3	4				1							1							1	2	3	4	5	6	7
8	9	10	11	12	13	14	15	16	17	18	19	20	21	22	23	24	25	26	27	28	29	30	31				
19	20	21	22	23	24	25	26	27	28	29	30	31		1	2	3	4	5	6	7	8	9	10	11	12	13	14
26	27	28	29	30	31		1	2	3	4	5	6	7	8	9	10	11	12	13	14	15	16	17	18	19	20	21

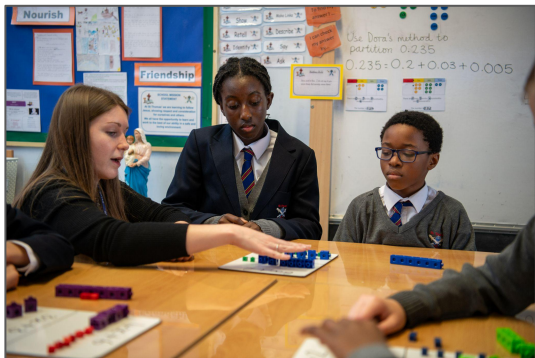
May 2026							June 2026							July 2026							August 2026						
M	T	W	T	F	S	S	M	T	W	T	F	S	S	M	T	W	T	F	S	S	M	T	W	T	F	S	S
1	2	3	4	5	6	7	8	9	10	11	12	13	14	15	16	17	18	19	20	21	22	23	24	25	26	27	28
29	30	31					1	2	3	4	5	6	7	8	9	10	11	12	13	14	15	16	17	18	19	20	21
22	23	24	25	26	27	28	29	30	31					1	2	3	4	5	6	7	8	9	10	11	12	13	14
29	30																										

= Schooldays
 = School holidays
 = Bank holidays
 = Weekends
 INSET day (staff training) school closed to pupils

In addition, schools allocate five non-pupil days out of the school days indicated, or the equivalent in disaggregated twilight sessions.

- Thursday 22nd January - Times Tables Rockstars/Numbots Day
- Thursday 29th January - RWI parent meeting 2:40pm
- Tuesday 10th February & Thursday 12th February - Parents' Evening (please note booster classes will not run on Tuesday 10th February)
- Half term: Monday 16th - Friday 20th February
- Thursday 12th March - 1T Celebration of the Word for Parents 2:45pm
- Thursday 19th March - Educational Visit to Colchester Zoo
- End of term: Friday 27th March at 1:30pm (Early close)

Autumn Term:	Monday 1 September 2025 – Friday 19 December 2025 <i>Half Term 27 October – 31 October</i>	75 days
Spring Term:	Monday 5 January 2026 – Friday 27 March 2026 <i>Half Term 16 February - 20 February</i>	55 days
Summer Term:	Monday 13 April 2026 – Monday 20 July 2026 <i>Half Term 25 May – 29 May, and May Bank Holiday - 4 May</i>	65 days 195 days



Trauma Perceptive

Practice:

Understanding behaviour and supporting emotional wellbeing.



*Embedding phase of
Maths Mastery*



*St. Thomas of Canterbury
Catholic Primary School*

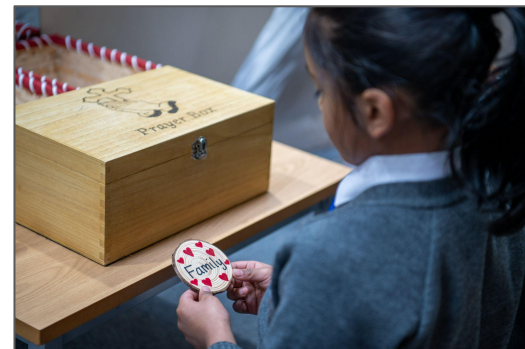
*New Religious
Education Directory:*

KS1 implementation complete. Now focusing on KS2.



Active Learning:

Forest School





Implementation of the new Religious Education Directory

To know You more clearly

The Religious Education Directory
for Catholic Schools, Academies and Colleges
in England and Wales



Religious
Education
Directory

We have begun to deliver lessons from the programme of study featured in the new Religious Education Directory (RED) entitled *To Know You More Clearly*. This new RE curriculum was launched in EYFS & KS1 last year and is being introduced to KS2 this academic year.

The six themes, or “branches” of the new curriculum are built around the liturgical calendar. The aim of the updated RED is to enable pupils to become more religiously literate so that they have the knowledge, understanding and skills to reflect spiritually, think ethically and theologically, as well as recognise what religious commitment demands in everyday life.





St. Thomas of Canterbury Catholic Primary School

Ward Avenue, Grays, Essex, RM17 5RW

PARENT VOLUNTEERS

Are you able to listen to children read?

Help with educational visits?

Help with school displays?

Assist with whole school events such as

Cultural Diversity Day or Sports Day?

WE WOULD APPRECIATE YOUR HELP

Please collect a form from the office.



Follow us!

[St Thomas of Canterbury Primary School Grays Facebook Page](#)





Parent Heritage Come and join us!

St. Thomas of Canterbury's Parent Heritage Group

Welcome to St Thomas of
Canterbury's Parent Heritage Group!

Parents and carers will have the opportunity to discuss how our school supports the diverse heritages and multi-cultures within our school. We would like to hear your suggestions about how else we can embrace all aspects of our diverse community.

Everybody welcome!

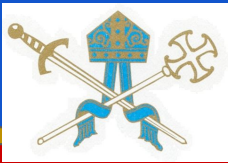
Dates to be confirmed...



What we aim to achieve:

- Working together as a school/home community to celebrate our diverse cultures across the school.
- Planning cultural days: traditional clothing, traditional music, traditional stories.
- Ways in which the school can support families in celebrating diversity.
- Your ideas for what you would like to see implemented/how you would like to take part and support the children.

**If you
would like
to join our
Parent
Heritage
Group,
please
contact
Mrs Foley,
class RF**



Friends of St Thomas' Come and join us!

Mrs Foley, our Community Involvement Lead, is leading the establishment of the Friends of St. Thomas of Canterbury.

If you would like to be a part of this parent support group, who come together to help raise much needed money for our school, you can contact our email address: friendsofstoc@stthomasofcanterbury.thurrock.sch.uk

We got together to organise the tea, coffee and sweet treat sales after the Nativities, concerts, Easter passion plays and parents evenings. We've held break the rules days (non-uniform days) as well as many raffle sales for Valentines, Mother's Day and Easter. We will be arranging: fetes, discos, and other fundraising events **if we get enough volunteers.**

If the only way you are able to support the school is by purchasing the things we have for sale, such as raffle tickets, cakes and coffees, this is still really valuable to help us raise funds!

Meet Arley, who you can contact for pre-loved school uniform;

