



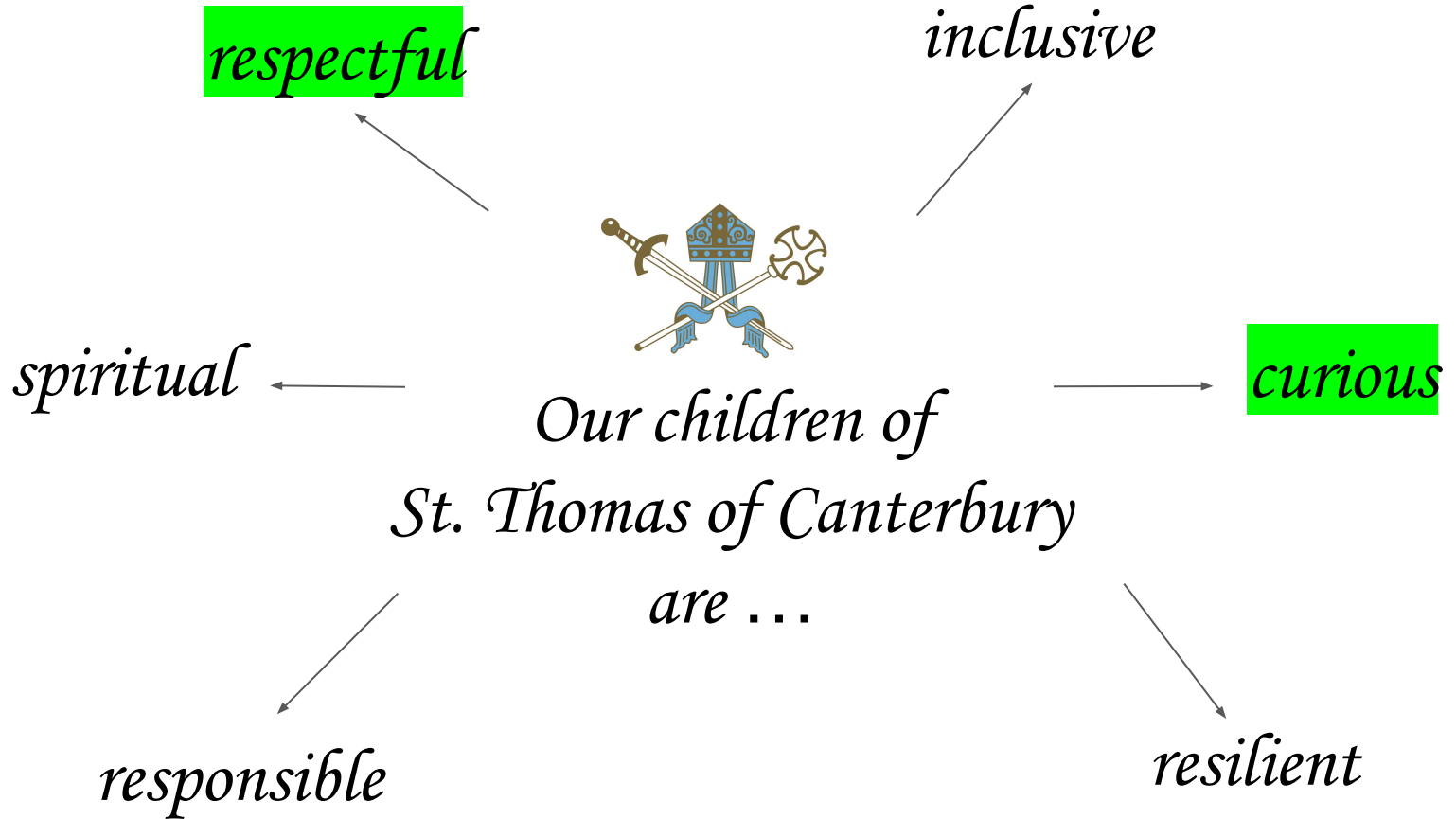
St Thomas of Canterbury Catholic Primary School

Year 6
Parent Information

January 2026



Our School Values





The Year 6 Team

- ❑ **Mr T Ellis** - Year Group Leader & Class 6E teacher
- ❑ **Miss McAnally** - Assistant Headteacher and Class 6FM teacher
- ❑ **Mrs French** - Class 6FM teacher
- ❑ **Mrs Margiotta** - Class 6M teacher
- ❑ **Mrs Cook** - HLTA
- ❑ **Mrs McGinley** - Support Staff

- ❑ **Miss S Pellat** - SENCo
- ❑ **Mrs M Cuff** - Inclusion Manager
- ❑ **Miss N Judd**- Safeguarding Officer





1

Your child's Class Teacher knows them best so should be the first point of contact. From 8:40am staff are working with children, so please speak to the teacher at the end of the school day.



2

If you have a further query, make an appointment to speak to the Year Group Leader.



3

Call the school office who may be able to answer your question immediately or pass a message to the relevant member of staff.
01375 375826

Communicating with the school

Email or call the school office to request to meet with a member of staff.
admin@stthomasofcanterbury.thurrock.sch.uk

Talk with any of our Senior Leaders:
Mrs Coppin
Mrs Smith
Ms McAnally

Send in a note with your child.

Speak with the staff on the school gate at the beginning or the end of the day.

Email the class teacher.

Or the Headteacher
Mrs Poulteney





Attendance and Punctuality



It's fine to send your child to school with a minor cough or runny nose. If they are unwell during the day, we will call you to collect your child.

Punctuality

8:40 - School gates open.

8:55 - The school day begins.

All children should be seated in class by this time.

3:10 - Parents arrive to collect.

3:15 - School day finishes.

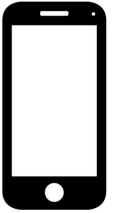


Absence Procedures

If your child is absent for any reason, you should contact the school office by telephone before 9:00am on the first day of absence. You will be expected to provide an explanation for the absence and an estimate of how long the absence will last, e.g. one school day.

UNAUTHORISED ABSENCE

Where a pupil reaches the national threshold of 10 sessions (equivalent to 5 school days) of unauthorised absence in a rolling period of 10 school weeks, the school will consider whether a penalty notice is appropriate. Each case will be considered individually to determine whether a penalty notice or another tool or legal intervention should be used to improve attendance.



A fixed penalty notice will be applied for in line with the LA's code of conduct and the DfE's 'Working together to improve school attendance' guidance.

Penalty notices for unauthorised absences will be charged at £160, reduced to £80 if paid within 21 days.

Where attendance still does not improve following a fixed penalty notice, the school will work with the LA to take forward attendance prosecution as a last resort.





Uniform - Spring term

BOYS

- White shirt
- School tie
- Grey V-necked jumper (preferably with the school logo)
- Grey trousers
- Grey socks
- Black shoes (not trainers)
- St Thomas's School blazer (optional)



GIRLS

- White shirt or blouse
- School tie
- Grey V-necked cardigan (preferably with the school logo)
- Grey skirt or pinafore
- Grey socks / tights
- Black shoes (not trainers)
- St Thomas's School blazer (optional)



COATS SHOULD BE BLACK OR NAVY. CHILDREN SHOULD HAVE A ST THOMAS'S BOOK BAG.



PE kit

REMINDER

Year 6's PE Day is Tuesday.

Your child should wear their PE kit to school on their PE day.



Children should wear their school tracksuit for PE during the Spring term.

If the weather is warm towards the Easter break, they can wear their blue T-shirt and red shorts.

Any child without a school tracksuit should wear a plain dark coloured tracksuit instead.

No earrings to be worn on PE days.

Children should wear black plimsolls or plain black trainers on their PE days.



Information about all school uniform can be found on the school website:

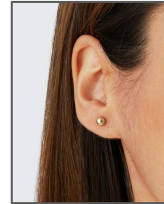
<https://www.stthomasofcanterbury.thurrock.sch.uk/page/?title=Uniform&pid=1831>





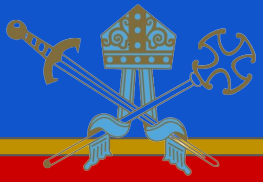
Hair/Accessories

- Hair accessories must be kept to a minimum and should be in school colours
- Hair braids should be natural hair colours.
- One small stud earring per ear.
(Children must not wear earrings on PE days.)



Please ensure that all your child's clothing is marked with his/her name.
We are not responsible for items of clothing which go missing.

Lost property is located in a black box outside of the main office.



Behaviour

Expectations

We believe that, in order to facilitate teaching and learning, acceptable behaviour must be demonstrated in all aspects of school life. The school is committed to:

- Promoting desired behaviour.
- Promoting self-esteem, self-discipline, proper regard for authority, and positive relationships based on mutual respect.
- Ensuring equality and fair treatment for all.
- Praising and rewarding good behaviour.
- Challenging and educating misbehaviour.
- Providing a safe environment free from disruption, violence, discrimination, bullying and any form of harassment.
- Encouraging positive relationships with parents.
- Developing positive relationships with pupils to enable early intervention.
- A shared approach which involves pupils in the implementation of the school's policy and associated procedures.
- Promoting a culture of praise and encouragement in which all pupils can achieve.



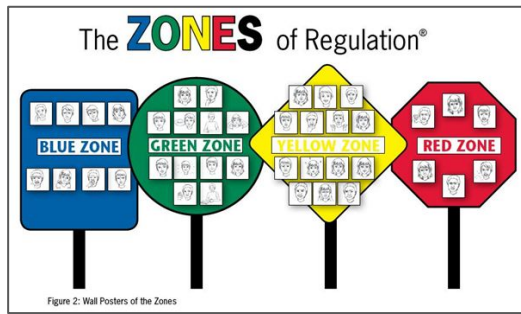
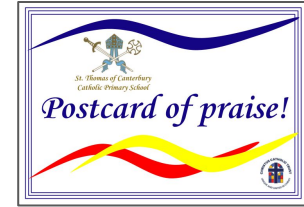


Figure 2: Wall Posters of the Zones

Zones of Regulation



We believe in a preventative approach, where children are treated with respect and where sanctions, when applied, are consistent.

Rewards for good behaviour at St Thomas's include:

- Verbal praise
- Communicating praise to parents
- House Points and stickers
- Certificates linked to our school values
- Prize ceremonies and special assemblies





Religious Education

Some parents have asked for more information on what Religious Education consists of at STOC.

Christ is at the centre of everything we do in school, as a Catholic School we;

- pray together at the start of the school day, before and after lunch and at the end of the day
- come together weekly for Celebration of the Word led by a member of staff
- share in class-led Celebrations of the Word over the academic year
- sing and learn new hymns in our musical celebration of the word
- provide children with the opportunity to lead on collective worship within the class based around Scripture
- offer opportunities for spontaneous prayer with prayer areas around the school
- share Advent and Lent bags with families so they can celebrate at home too
- have Faith Councillors in every class
- celebrate both Mass and other services such as Ash Wednesday
- invite Fr Paschal to come in and talk classes in different year groups about topics they are studying
- portray the Nativity and Easter Passion with performances in school for the community
- support the community and fundraise for charities, donating to food banks and clothes banks.



Our learning this term - Religious Education

2 RE lessons per week

Spring Term - themes and topics

- Galilee to Jerusalem (RED Branch 3) - we are focusing on the Gospel of John and the teachings from the scripture.
- Desert to Garder (RED Branch 4) - we will be focusing on Lent, Holy Week and Easter.



- Celebration of the Word
- Musical Celebration of the Word

Mass is celebrated regularly at school and church for the whole school and individual year groups. All parents welcome to attend.



We learn, achieve and love following Jesus.





Phonics or SATs or MTC

These national tests for Year 6 pupils cover English grammar, punctuation, spelling, English reading, and mathematics. We will be completing mock assessments throughout the year.

Monday, May 11th to Thursday, May 14th, 2026

Here is the schedule for the 2026 KS2 SATs:

- **Monday, May 11th, 2026:** English grammar, punctuation and spelling test (including a short answer paper /50 and a spelling paper /20).
- **Tuesday, May 12th, 2026:** English reading test (/50).
- **Wednesday, May 13th, 2026:** Mathematics Paper 1 (arithmetic /40) and Paper 2 (reasoning /35).
- **Thursday, May 14th, 2026:** Mathematics Paper 3 (reasoning /35).

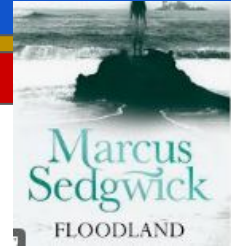
This link will show the full curriculum coverage that will be studied this year -

https://assets.publishing.service.gov.uk/media/5a81a9abe5274a2e8ab55319/PRIMARY_national_curriculum.pdf





Our learning this term

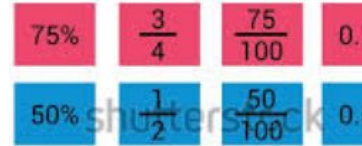


Throughout the Spring term, this is what we will be covering:

English: During Reading lessons, we will be reading the texts 'Floodland' and 'Goodnight Mr Tom'. During Writing lessons, we will be following a writing cycle structure of exploring a genre, planning, writing and editing for variety of genres including diary entries, newspaper reports and narratives.

Maths: In Maths lessons, we will be covering the Year 6 objectives for Fractions, Decimals, Percentages, Measurement and Position and Direction.

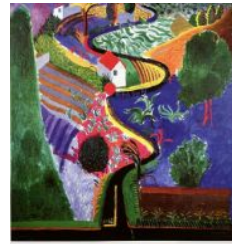
Science: In Spring 1, we will be learning about Electricity. In Spring 2, we will be focusing on British Science Week, which has the theme of 'Curiosity!'





Our learning this term

Art & Design/Design & Technology: This half term, we will be studying different artists' work to find meaning in paintings as well as how art can be used to portray messages and tell stories. Next half term, we will be focussing on and electrical systems (steady hand games).



DAVID HOCKNEY

Computing: This half term, we will be focussing on using the coding language of python. Next half term, we will be focussing on data analysis and how to use big data.





Our learning this term

Quelques verbes RE

attendre	- to wait (for)
	- to expect; eg: attendre un enfant
descendre	- to descend
défendre	- to defend; to forbid
dépendre (de)	- to depend (on)
descendre	- to descend
entendre	- to hear
fondre	- to melt
mordre	- to bite
perdre	- to lose
rendre	- to give back
répondre	- to answer
suspendre	- to suspend
vendre	- to sell



French: This term we will be focussing on the topics Les Verbes Réguliers and Le Week-end.

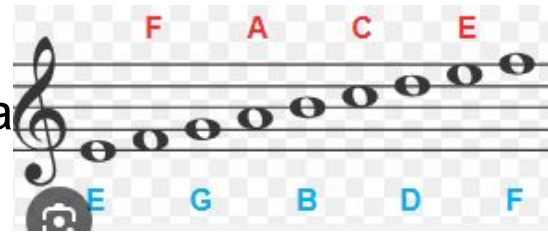
Geography: This half term, we will be covering Extreme Earth focussing on the Earth's climate and the effects of extreme weather such as tornadoes, earthquakes and tsunamis. Next half term, we will be exploring World War 2, specifically how it began, evacuation, women's roles, countries who helped the allies and how the war came to an end.





Our learning this term

Music: This term, we will be deepening our understanding and use of formal, written notation. We will also be playing and performing in solo or ensemble contexts with increasing accuracy, control, fluency and expression.



PE: In Spring 1, our topic is Gymnastics. Children will learn how to safely jump, climb and roll using a variety of equipment. They will also begin to create sequences of movement. In Spring 2, our topic is tennis. Children will learn to control the ball, develop an underarm swing, develop footwork and exploring positioning on the court.





Homework

Homework is set every week on a **Friday** and will be due in the following **Wednesday**. It will be detailed on google classroom.

- **Reading = 5 signatures a week**- It is your child's responsibility to ensure they keep a record of their reading and to change a book once they have completed what they are reading.
- **Maths = TTRS** (this is due on a Monday).
- **English = SATs Bootcamp**



The children should have all of these logins, but please contact your class teacher if you are missing any.

The spellings and details of the homework and emailed home and posted on google classroom every week including any messages.



Forest School



Forest School is a fun and adventurous way for children to learn outdoors. It helps build confidence, teamwork and problem-solving skills while letting children explore nature. Pupils will learn how to use tools safely, care for the environment, and, most importantly, have lots of fun, including fire safety and even enjoy some outdoor cooking in a safe, controlled environment.

During the year, each class will have a series of sessions, led by a qualified Forest School coordinator, during school hours at a scheduled time each Friday, in our dedicated Forest School outdoor learning area. Your child needs to wear their school PE kit for the duration of the sessions. Since Forest School happens in all weather (unless it is extremely windy or icy), please make sure your child has:

- PE kit tracksuit with long trousers and jumper or PE jacket
- A waterproof coat for rainy days and warmer coat in winter
- School jumper can be worn for extra layers in winter
- Trainers (wellies or boots on rainy days*)



* As our Forest School area is quite sheltered, trainers will be suitable to be worn most of the time, however school staff will always notify parents in advance if wellies or boots are needed for particularly wet weather.



Educational Visits

This term we will be visiting the International War Museum at Duxford. It will be linking with our learning about the World Wars in history. Relevant details will be sent out during the term.

Please note that if we do not receive sufficient contributions towards educational visits, then they may have to be cancelled. Payments are made via Arbor.

Consent must be given for every child before we can allow them to participate. Verbal consent is **not** accepted for children to take part in any activity.





After school clubs

We are delighted to offer a wide range of after-school clubs this academic year, details of which are sent out at the beginning of each term.

Parents/carers can also access Jules et Lis before and after school clubs, run by an external provider. Details can be found on <https://julesetlis.co.uk/>





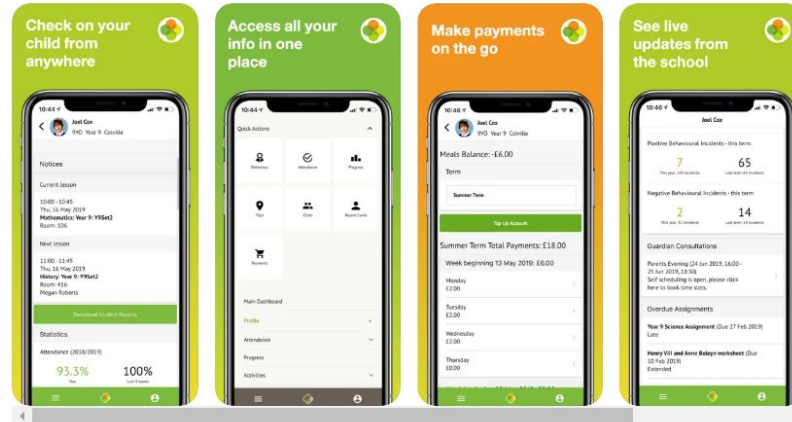
Arbor

All correspondence, payments, club bookings and consent for trips will be sent electronically through Arbor.



Arbor 12+
Parent & Guardian Portal
Arbor Education Partners
Designed for iPhone
#17 in Education
★ ★ ★ ★ 1.4 + 761 Ratings
Free

iPhone Screenshots





Dates for your diary



St Thomas of Canterbury Catholic Primary School
Term Dates Academic Year 2025-2026



September 2025							October 2025							November 2025							December 2025							
M	T	W	T	F	S	S	M	T	W	T	F	S	S	M	T	W	T	F	S	S	M	T	W	T	F	S	S	
										1	2	3	4	5														
	2	3	4	5	6	7	6	7	8	9	10	11	12	3	4	5	6	7	8	9	8	9	10	11	12	13	14	
8	9	10	11	12	13	14	13	14	15	16	17	18	19	10	11	12	13	14	15	16	15	16	17	18	19	20	21	
15	16	17	18	19	20	21	20	21	22	23	24	25	26	17	18	19	20	21	22	23	22	23	24	25	26	27	28	
22	23	24	25	26	27	28	27	28	29	30	31			24	25	26	27	28	29	30	29	30	31					
29	30													24	25	26	27	28	29	30	29	30	31					

January 2026							February 2026							March 2026							April 2026						
M	T	W	T	F	S	S	M	T	W	T	F	S	S	M	T	W	T	F	S	S	M	T	W	T	F	S	S
													1														
			1	2	3	4																					
5	6	7	8	9	10	11	2	3	4	5	6	7	8	2	3	4	5	6	7	8	6	7	8	9	10	11	12
12	13	14	15	16	17	18	9	10	11	12	13	14	15	9	10	11	12	13	14	15	13	14	15	16	17	18	19
19	20	21	22	23	24	25	16	17	18	19	20	21	22	16	17	18	19	20	21	22	20	21	22	23	24	25	26
26	27	28	29	30	31	23	24	25	26	27	28	23	24	25	26	27	28	29	27	28	29	30					
														30	31												

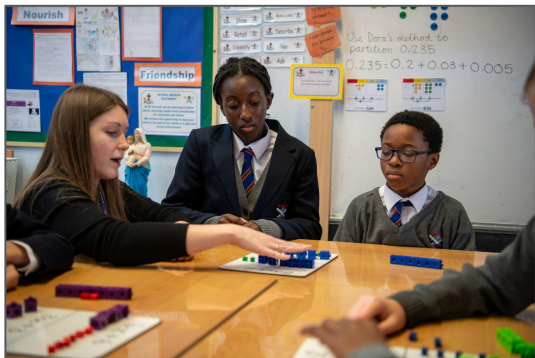
May 2026							June 2026							July 2026							August 2026						
M	T	W	T	F	S	S	M	T	W	T	F	S	S	M	T	W	T	F	S	S	M	T	W	T	F	S	S
							1	2	3	4	5	6	7														
4	5	6	7	8	9	10	8	9	10	11	12	13	14	6	7	8	9	10	11	12	3	4	5	6	7	8	9
11	12	13	14	15	16	17	15	16	17	18	19	20	21	13	14	15	16	17	18	19	10	11	12	13	14	15	16
18	19	20	21	22	23	24	22	23	24	25	26	27	28	20	21	22	23	24	25	26	17	18	19	20	21	22	23
25	26	27	28	29	30	31	29	30						27	28	29	30	31	24	25	26	27	28	29	30		
																				31							

= Schooldays
 = School holidays
 = Bank holidays
 = Weekends
 INSET day (staff training) school closed to pupils

In addition, schools allocate five non-pupil days out of the school days indicated, or the equivalent in disaggregated twilight sessions.

- Thursday 22nd January - Times Tables Rockstars/Numbots Day
- Celebration of the Word for Parents 2:45pm 6E- 30th January 2026
6FM- 6th February 2026
6M- 13th February 2026
- Tuesday 10th February & Thursday 12th February - Parents' Evening (please note booster classes will not run on Tuesday 10th February)
- Half term: Monday 16th - Friday 20th February
- End of term: Friday 27th March at 1:30pm (Early close)

Autumn Term:	Monday 1 September 2025 – Friday 19 December 2025 <i>Half Term 27 October – 31 October</i>	75 days
Spring Term:	Monday 5 January 2026 – Friday 27 March 2026 <i>Half Term 16 February - 20 February</i>	55 days
Summer Term:	Monday 13 April 2026 – Monday 20 July 2026 <i>Half Term 25 May – 29 May, and May Bank Holiday - 4 May</i>	65 days 195 days



Trauma Perceptive

Practice:

Understanding behaviour and supporting emotional wellbeing.



Embedding phase of Maths Mastery



*St. Thomas of Canterbury
Catholic Primary School*

New Religious Education Directory:

KS1 implementation complete. Now focusing on KS2.



Active Learning:

Forest School



St. Thomas of Canterbury Catholic Primary School

Ward Avenue, Grays, Essex, RM17 5RW

PARENT VOLUNTEERS

Are you able to listen to children read?

Help with educational visits?

Help with school displays?

Assist with whole school events such as

Cultural Diversity Day or Sports Day?

WE WOULD APPRECIATE YOUR HELP

Please collect a form from the office.



Follow us!

[St Thomas of Canterbury Primary School Grays Facebook Page](#)





Friends of St Thomas' Come and join us!

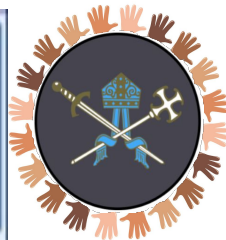
Mrs Foley, our Community Involvement Lead, is leading the establishment of the Friends of St. Thomas of Canterbury.

If you would like to be a part of this parent support group, who come together to help raise much needed money for our school, you can contact our email address: friendsofstoc@stthomasofcanterbury.thurrock.sch.uk

We got together to organise the tea, coffee and sweet treat sales after the Nativities, concerts, Easter passion plays and parents evenings. We've held break the rules days (non-uniform days) as well as many raffle sales for Valentines, Mother's Day and Easter. We will be arranging; fetes, discos, and other fundraising events **if we get enough volunteers.**

If the only way you are able to support the school is by purchasing the things we have for sale; raffle tickets, cakes and coffees, this is still really valuable to help us raise funds!

Meet Arley, who you can contact for pre-loved school uniform;





Parent Heritage Come and join us!

St. Thomas of Canterbury's Parent Heritage Group

Welcome to St Thomas of
Canterbury's Parent Heritage Group!

Parents and carers will have the opportunity to discuss how our school supports the diverse heritages and multi-cultures within our school. We would like to hear your suggestions about how else we can embrace all aspects of our diverse community.

Everybody welcome!

Dates to be confirmed...



What we aim to achieve:

- Working together as a school/home community to celebrate our diverse cultures across the school.
- Planning cultural days: traditional clothing, traditional music, traditional stories.
- Ways in which the school can support families in celebrating diversity.
- Your ideas for what you would like to see implemented/how you would like to take part and support the children.

**If you
would like
to join our
Parent
Heritage
Group,
please
contact
Mrs Foley,
class RF**