



St Thomas of Canterbury Catholic Primary School

*Welcome to the Year 4
Parent Information Meeting*

September 2025



Our School Values

respectful

inclusive



spiritual

*Our children of
St. Thomas of Canterbury
are ...*

curious

responsible

resilient



The Year 4 Team

- Miss M Shurelova** - Year Group Leader & Class 4S teacher
- Mrs J Leary** - Class 4L teacher
- Mrs S Dale / Mrs N Smith** - Class 4DS teachers
- Mrs C Ashdown, Ms L Wood** - Year 4 support staff

- Miss S Pellat** - SENCo
- Mrs M Cuff** - Inclusion Manager





1

Your child's Class Teacher knows them best so should be the first point of contact. From 8:40am staff are working with children, so please speak to the teacher at the end of the school day.



2

If you have a further query, make an appointment to speak to the Year Group Leader.



3

Call the school office who may be able to answer your question immediately or pass a message to the relevant member of staff.
01375 375826

Communicating with the school

Email or call the school office to request to meet with a member of staff.
admin@stthomasofcanterbury.thurrock.sch.uk

Talk with any of our Senior Leaders:
Mrs Coppin
Mrs Smith
Ms McAnally

Send in a note with your child.

Speak with the staff on the school gate at the beginning or the end of the day.

Email the class teacher.

Or the Headteacher
Mrs Poulteney





Attendance and Punctuality



It's fine to send your child to school with a minor cough or runny nose.
If they are unwell during the day we shall call you to collect your child.

Punctuality

8:40 - School gates open.

8:55 - The school day begins.

All children should be seated in class by this time.

3:10 - Parents arrive to collect.

3:15 - School day finishes.

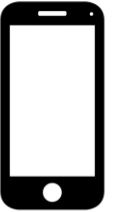


Absence Procedures

If your child is absent for any reason, you should contact the school office by telephone before 9:00 am on the first day of absence. You will be expected to provide an explanation for the absence and an estimate of how long the absence will last, e.g. one school day.

UNAUTHORISED ABSENCE

Where a pupil reaches the national threshold of 10 sessions (equivalent to 5 school days) of unauthorised absence in a rolling period of 10 school weeks, the school will consider whether a penalty notice is appropriate. Each case will be considered individually to determine whether a penalty notice or another tool or legal intervention should be used to improve attendance.



A fixed penalty notice will be applied for in line with the LA's code of conduct and the DfE's 'Working together to improve school attendance' guidance.

Penalty notices for unauthorised absences will be charged at £160, reduced to £80 if paid within 21 days.

Where attendance still does not improve following a fixed penalty notice, the school will work with the LA to take forward attendance prosecution as a last resort.





Uniform - Autumn term

Winter uniform is compulsory after the Autumn half term holiday.

BOYS

- White shirt
- School tie
- Grey V-necked jumper (preferably with the school logo)
- Grey trousers
- Black shoes (not trainers)
- St Thomas' School blazer (optional)



GIRLS

- White shirt or blouse
- School tie
- Grey V-necked cardigan (preferably with the school logo)
- Grey skirt or pinafore
- Grey socks / tights
- Black shoes (not trainers)
- St Thomas' School blazer (optional)



Coats should be black or navy. Children should have a St Thomas' school bag.



PE kit

REMINDER

Year 4's PE day is Thursday.

Your child should wear their PE kit to school on their PE day.



Children should wear their school tracksuit for PE during the Autumn term.

If the weather is warm, they can wear their blue T-shirt and red shorts.

Any child without a school tracksuit should wear a plain dark coloured tracksuit instead.

No earrings to be worn on PE days.

Children should wear black plimsolls or plain black trainers on their PE days.



Information about all school uniform can be found on the school website:

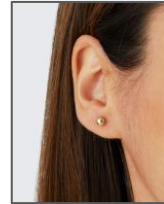
[StThomasofCanterburySchoolUniform](#)





Hair/Accessories

- Hair accessories must be kept to a minimum and should be in school colours- Grey, red or blue in the Winter
- Hair braids should be natural hair colours.
- One small stud earring per ear. (Children must not wear earrings on PE days.)



Please ensure that all your child's clothing is marked with his/her name. We are not responsible for items of clothing which go missing.

Lost property is located in a black box outside of the main office.



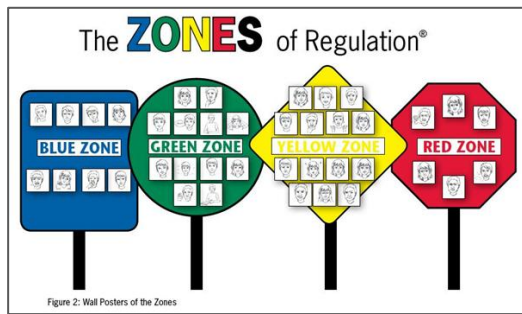
Behaviour

Expectations

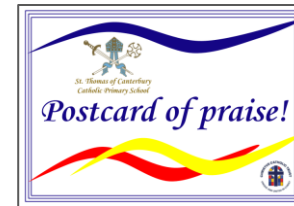
We believe that, in order to facilitate teaching and learning, acceptable behaviour must be demonstrated in all aspects of school life. The school is committed to:

- Promoting desired behaviour.
- Promoting self-esteem, self-discipline, proper regard for authority, and positive relationships based on mutual respect.
- Ensuring equality and fair treatment for all.
- Praising and rewarding good behaviour.
- Challenging and educating misbehaviour.
- Providing a safe environment free from disruption, violence, discrimination, bullying and any form of harassment.
- Encouraging positive relationships with parents.
- Developing positive relationships with pupils to enable early intervention.
- A shared approach which involves pupils in the implementation of the school's policy and associated procedures.
- Promoting a culture of praise and encouragement in which all pupils can achieve.





ones of Regulation



We believe in a preventative approach, where children are treated with respect and where sanctions, when applied, are consistent.

Rewards for good behaviour at St Thomas's include:

- **Verbal praise**
- **Communicating praise to parents**
- **Housepoints and stickers**
- **Certificates linked to our school values**
- **Prize ceremonies and special assemblies**





Introducing Miss Pellat, our SENCO.



Hello, my name is Miss Pellat and I have been working at St. Thomas' since April 2025. I have been teaching in England for more than 20 years and I have successfully completed my National Award for SEN Coordination in 2017. I have a passion for supporting all children to access the curriculum and to make progress, promoting Inclusion and ensuring they have the right support in place when needed.

I am here to provide a link between home and school, supporting you with:

- discussing concerns and identifying and assessing your child's needs
- developing and implementing a support plan with class teacher's input
 - meeting and reviewing annually your child's EHCP
 - providing guidance and support about SEN
- coordinating with external agencies and making referrals when necessary

Please feel free to approach me if you see me around school or liaise with the class teacher. You can phone or email the office to arrange a suitable time to meet:

admin@stthomasofcanterbury.thurrock.sch.uk 01375 375826

I look forward to working with you!



Introducing Mrs Cuff, our Inclusion Manager.



Hello, my name is Mrs Cuff and I have been working at St. Thomas' since September 2024. Previously I worked for Treetops School as a classroom Instructor. I have worked with children with varied Special Educational Needs in all key stages, for 18 years. I have a passion for supporting children reach their full potential.

I am here to lead and manage the school SEN provision working with staff, parents and external agencies to create a welcoming and effective learning environment for all. Providing tailored support and creating an inclusive learning environment.

Please feel free to approach me if you see me around school, alternatively you can email me to arrange a suitable time to meet.

Please email mcuff@stthomasofcanterbury.thurrock.sch.uk or telephone the school office on 01375 375826 or speak with the class teacher.

I look forward to working with you!



Introducing Miss Pritchard, our Family Support Officer.

Hello, my name is Miss Pritchard and I have been working at St. Thomas' for 5 years. Previously I worked with the local Family Hub, supporting parents in their home environment to help settle their child and prepare them for school. I am passionate about helping every child thrive by supporting families with practical strategies and guidance. My role is to provide a strong link between home and school, working closely with you to support your child's development and wellbeing.

Some of the areas I can support you with include:

- Bedtime routines
- Setting boundaries
- Healthy eating

Please feel free to approach me if you see me around school, alternatively you can email me to arrange a suitable time to meet.

Please email cpritchard@stthomasofcanterbury.thurrock.sch.uk or telephone the school office on 01375 375826. Alternatively speak to your child's class teacher.

I look forward to working with you and your family!





Introducing Miss Judd, our Safeguarding Officer.

Hello, my name is Miss Judd and I have joined St Thomas's school community in September 2025. Previously I worked for Hassenbrook as a pastoral support manager, providing support to both students and parents/carers on a daily basis.

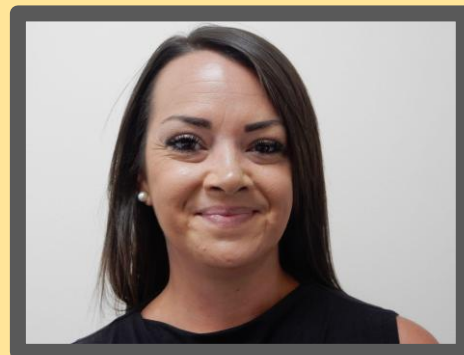
I am here to provide a link between home and school, supporting you with strategies such as:

- Bedtime routines
- Setting boundaries
- Healthy eating

Please feel free to approach me if you see me around school. Alternatively you can email me to arrange a suitable time to meet.

Please email njudd@stthomasofcanterbury.thurrock.sch.uk Or telephone the school office on 01375375826 or speak with the class teacher.

I look forward to working with you!





Religious Education

Some parents have asked for more information on what Religious Education consists of at STOC.

Christ is at the centre of everything we do in school, as a Catholic School we;

- pray together at the start of the school day, before and after lunch and at the end of the day
- come together weekly for Celebration of the Word led by a member of staff
- share in class-led Celebrations of the Word over the academic year
- sing and learn new hymns in our musical celebration of the word
- provide children with the opportunity to lead on collective worship within the class based around Scripture
- offer opportunities for spontaneous prayer with prayer areas around the school
- share Advent and Lent bags with families so they can celebrate at home too
- have Faith Councillors in every class
- celebrate both Mass and other services such as Ash Wednesday
- invite Fr Pascal to come in and talk classes in different year groups about topics they are studying
- portray the Nativity and Easter Passion with performances in school for the community
- support the community and fundraise for charities, donating to foodbanks and clothes banks.



Our learning this term - Religious Education

2 RE lessons per week from the new Religious Education Directory

Autumn Term - themes and topics

- Creation and Covenant
- Prophecy and Promise



- Weekly Assembly
- Celebration of the Word
- Musical Celebration of the Word

In Creation and Covenant children explore the call of God and His relationship with His people, first through Abraham and Moses, then through the narrative of the Old Testament.

In the branch Prophecy and Promise children explore the Christian understanding of the teachings of the Prophets pointing to the fulfillment of God's promise in a messiah, Jesus Christ.

Mass is celebrated regularly at school and church for the whole school and individual year groups. All parents welcome to attend.



We learn, achieve and love following Jesus.





MTC



Throughout this academic year, your child(ren) will be working towards taking part and completing the Multiplication Tables Check. This is administered within the two week period from 1st June 2026. Unofficial checks take place twice before the actual check in June 2026.

Key information:

- The purpose is to determine whether pupils can recall their times tables fluently which is essential for future success in mathematics.
- Each child's results will be known to the school and the government will have a national picture.
- The MTC is an online test with 25 questions (**multiplication only**); children must answer each question within a 6 seconds time limit so the whole test will take less than 5 minutes.



Times Tables



There is a three stage structure to the children learning their tables

Stage 1 - Rote and relationships – here, facts are individually boxed to show fact families but also colour coded for pupils to begin to see the doubles and halves relationships.

Stage 2 - Memorisation – here, the facts are still boxed but where the doubles and halves and fact, family relationships are mixed.

Stage 3 - Varied application – here, the problems are represented with missing number so that pupils can apply their knowledge in a varied application.



Where needed, children will be given adapted Times Tables foci, to ensure they are developing the recall and understanding at their pace.

This could mean that some children will be put on the 'Automatic' training mode on TT Rockstars.

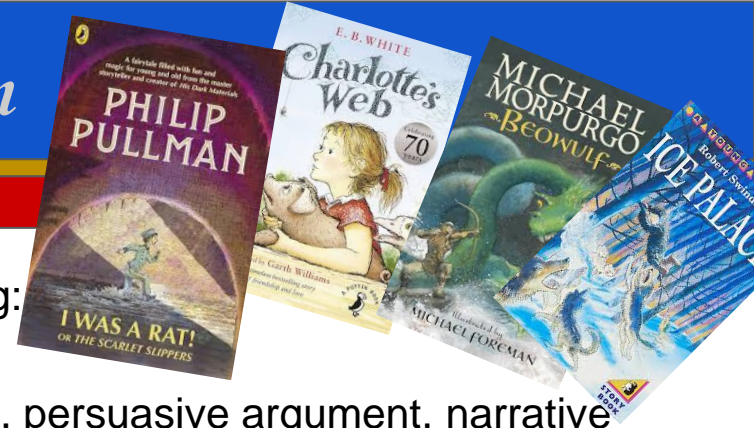


Times Tables

Term	Wk1	Wk2	Wk3	Wk4	Wk5	Wk6	Wk7
Aut1	Baseline	3x	3x	6x	6x	12x	12x
Aut2	4x	4x	8x	8x	7x	7x	9x
Spr1	9x	11x	11x	5x,10x	3x	6x	
Spr2	2x,5x,10x	12x	4x	8x	7x		
Sum1	9x	3x,6x	12x	4x,8x	7x	9x	
Sum2	Targeted practice	MTC	Mixed table checks - weekly				



Our learning this term



Throughout the Autumn term, this is what we will be covering:

English:

Autumn 1 - 'I was a Rat!' and 'Charlotte's Web' - description, persuasive argument, narrative alternative endings

Autumn 2 - 'Beowulf' and 'Ice Palace' - short narrative, hero advert, persuasive advert, narrative - writing a battle scene from a different perspective

Maths:

Autumn 1 - Unit 1: Reasoning with 4-digit numbers

Unit 2: Addition and subtraction; Unit 3: Multiplication and Division

Autumn 2 - Unit 3: Multiplication and Division; Unit 4: Discrete and continuous data

Science: Autumn 1 - Animals, Including Humans; Autumn 2 - States of Matter





Our learning this term

Art & Design:

Autumn 1 Drawing: Power Prints



Computing:

Aut 1 - Computing systems and networks 1 - Collaborative learning

Aut 2 - Programming - Coding with Scratch

Autumn 2 Design & Technology:

Mechanical systems: Making a slingshot car





Our learning this term

French: (Taught by Mrs Walsh)

Aut 1 - Je Me Présente (Introducing Myself)

Aut 2 - En Famille (Family)

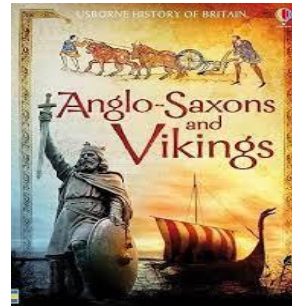


Geography:

Aut 1 - Local Area Study - How to make Grays more environmentally friendly

History:

Aut 2 - Invaders and Settlers - Saxons vs Vikings





Our learning this term

Music: (Taught by Dr Shore - Music Teacher)

Aut 1 - World songs - Part singing etc Maliswe - Maliswe, Si Si Si Banaha etc in parts - Drumming

Aut 2 - Learning recorders



PE: (Taught on Thursdays!)

Aut 1 - Fundamentals and Dance



Aut 2 - Football and Ball Skills





Reading

Becoming a fluent, skilled and attentive reader starts at the earliest stages. Therefore, making sure that children become engaged with reading at the earliest opportunity is one of the most important ways to make a difference to their life chances.



Books are changed weekly. Please listen to your child read every day and and leave a comment in his/her reading record.





Homework

Year 4 homework expectations

- ❑ Homework goes out on Friday and needs to be completed by and submitted on Wednesday the following week
- ❑ Weekly spelling homework set - see spelling sheet stuck into your child's Reading Record - these are based on the spellings and spelling rules from each week's lessons (twice a week sessions).
- ❑ Reading at home to an adult 5x a week. Ensure your child's reading journal is submitted to their Class Teacher every Friday, signed by you each time he/she read.
- ❑ Times Tables Practice Workout- Each week your child will be asked to complete a Times Tables Workout from the Year 4 Times Tables Workbook, which he/she has to submit every Wednesday to be checked by their Class Teacher.

Year 4 Autumn 1 Weekly Spelling Lists

Week 1 - Test 23.9	Week 2 - Test 30.9	Week 3 - Test 7.10	Week 4 - Test 14.10	Week 5 - Test 21.10																				
pleasure treasure measure closure enclosure leisure exposure certain circle disappear	Use the apostrophe to show possession of each object. Adam owns the book - It is Adam's book. <table border="1" style="margin: 10px auto;"> <tr> <td>Joe</td> <td>pencil case</td> <td>Sandra</td> <td>football</td> </tr> <tr> <td>Tara</td> <td>cards</td> <td>John</td> <td>ruler and set square</td> </tr> <tr> <td>Ahmed</td> <td>pens</td> <td>Tyler</td> <td>treasure</td> </tr> <tr> <td>Joy</td> <td>book</td> <td>Fred</td> <td>trampoline</td> </tr> <tr> <td>Agnes</td> <td>reading book</td> <td>Alice</td> <td>presentation</td> </tr> </table>	Joe	pencil case	Sandra	football	Tara	cards	John	ruler and set square	Ahmed	pens	Tyler	treasure	Joy	book	Fred	trampoline	Agnes	reading book	Alice	presentation	eight eighth experience famous favourite guard guide height imagine, knowledge	mane peace bear fair main blue fare piece bare blew	believe accident actual caught accidentally bicycle centre century actually business
Joe	pencil case	Sandra	football																					
Tara	cards	John	ruler and set square																					
Ahmed	pens	Tyler	treasure																					
Joy	book	Fred	trampoline																					
Agnes	reading book	Alice	presentation																					
Week 6 - Test 4.11 irrational illegal immobile illegible irregular impossible impatient irresponsible immature illiterate		These are the week-by-week spellings that we will be teaching every Thursday during our spelling lesson and then testing the children on on the day shown. Children should rehearse the words, find out their meanings, use them in sentences and be tested on the words too.																						



Forest School



Forest School is a fun and adventurous way for children to learn outdoors. It helps build confidence, teamwork and problem-solving skills while letting children explore nature. Pupils will also learn how to use tools safely, care for the environment, and, most importantly, have lots of fun, including fire safety and even enjoy some outdoor cooking in a safe, controlled environment.

During the year, each class will have a series of sessions, led by a qualified Forest School coordinator, during school hours at a scheduled time each Tuesday, in our dedicated Forest School outdoor learning area. This is beginning with Year 2 and Year 5 in Autumn 1, then other year groups will follow. Your child needs to wear their school PE kit for the duration of the sessions. Since Forest School happens in all weather (unless it is extremely windy or icy), please make sure your child has:

- PE kit tracksuit with long trousers and jumper or PE jacket
- A waterproof coat for rainy days and warmer coat in winter
- School jumper can be worn for extra layers in winter
- Trainers (wellies or boots on rainy days*)



* As our Forest School area is quite sheltered, trainers will be suitable to be worn most of the time, however school staff will always notify parents in advance if wellies or boots are needed for particularly wet weather.



Educational Visits

Autumn 1 - Grays Park Walk - WC 29th September.

4S - 29.9 4L - 30.9 4DS = 1.10

Autumn 2

Saxon and Viking Workshop - 8.12



Please note that if we do not receive sufficient contributions towards educational visits, then they may have to be cancelled. Payments are made via Arbor.

Consent must be given for every child before we can allow them to participate. Verbal consent is **not** accepted for children to take part in any activity.

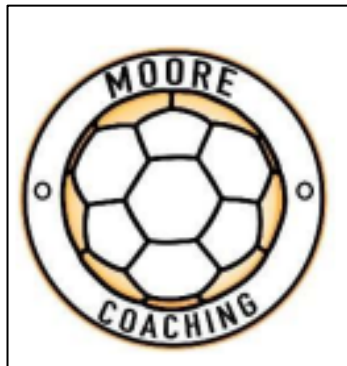




After school clubs

We are delighted to offer a wide range of after-school clubs this academic year, details of which are sent out at the beginning of each term.

Parents/carers can also access Jules et Lis before and after school clubs, run by an external provider. Details can be found on <https://julesetlis.co.uk/>





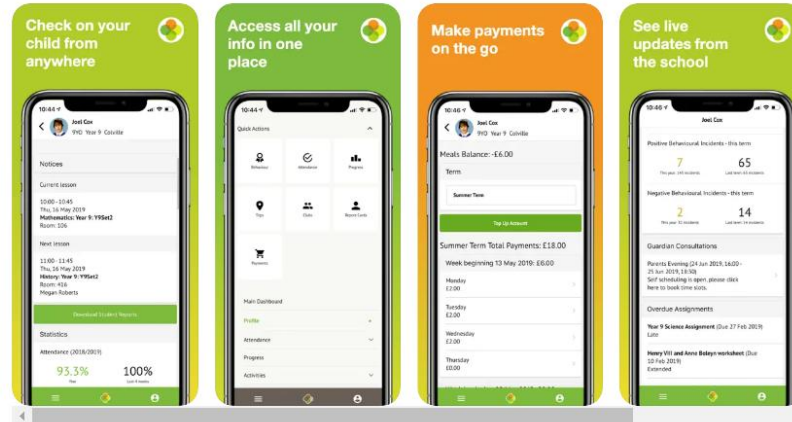
Arbor

All correspondence, payments, club bookings and consent for trips will be sent electronically through Arbor.



Arbor 12+
Parent & Guardian Portal
Arbor Education Partners
Designed for iPhone
#17 in Education
★★★★ 1.4 + 761 Ratings
Free

iPhone Screenshots





Dates for your diary



St Thomas of Canterbury Catholic Primary School
Term Dates Academic Year 2025-2026



September 2025							October 2025							November 2025							December 2025						
M	T	W	T	F	S	S	M	T	W	T	F	S	S	M	T	W	T	F	S	S	M	T	W	T	F	S	S
									1	2	3	4	5	6	7	8	9	10	11	12	13	14	15	16	17	18	19
1	2	3	4	5	6	7	8	9	10	11	12	13	14	15	16	17	18	19	20	21	22	23	24	25	26	27	28
8	9	10	11	12	13	14	15	16	17	18	19	20	21	22	23	24	25	26	27	28	29	30	31				
15	16	17	18	19	20	21	22	23	24	25	26	27	28	29	30	31											
22	23	24	25	26	27	28	29	30	31																		
29	30																										

January 2026							February 2026							March 2026							April 2026						
M	T	W	T	F	S	S	M	T	W	T	F	S	S	M	T	W	T	F	S	S	M	T	W	T	F	S	S
			1	2	3	4						1						1				1	2	3	4	5	
5	6	7	8	9	10	11	12	13	14	15	16	17	18	19	20	21	22	23	24	25	26	27	28	29	30	31	
12	13	14	15	16	17	18	19	20	21	22	23	24	25	26	27	28	29	30	31								
19	20	21	22	23	24	25	16	17	18	19	20	21	22	16	17	18	19	20	21	22	20	21	22	23	24	25	26
26	27	28	29	30	31	23	24	25	26	27	28	29	30	31													

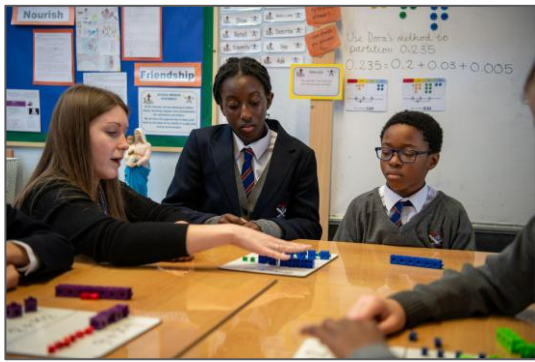
May 2026							June 2026							July 2026							August 2026						
M	T	W	T	F	S	S	M	T	W	T	F	S	S	M	T	W	T	F	S	S	M	T	W	T	F	S	S
4	5	6	7	8	9	10	11	12	13	14	15	16	17	18	19	20	21	22	23	24	25	26	27	28			
11	12	13	14	15	16	17	18	19	20	21	22	23	24	25	26	27	28	29	30	31							
18	19	20	21	22	23	24	25	26	27	28	29	30	31														
25	26	27	28	29	30	31	29	30																			

- = Schooldays
- = School holidays
- = Bank holidays
- = Weekends
- INSET day (staff training) school closed to pupils

In addition, schools allocate five non-pupil days out of the school days indicated, or the equivalent in disaggregated twilight sessions.

Autumn Term:	Monday 1 September 2025 – Friday 19 December 2025 <i>Half Term 27 October – 31 October</i>	75 days
Spring Term:	Monday 5 January 2026 – Friday 27 March 2026 <i>Half Term 16 February - 20 February</i>	55 days
Summer Term:	Monday 13 April 2026 – Monday 20 July 2026 <i>Half Term 25 May – 29 May, and May Bank Holiday - 4 May</i>	65 days 195 days

- Year 4 Mass at church : Wednesday, 22nd October 10am
- Half term: Monday, 27th October - Friday, 31st October
- INSET Days: Thursday 23rd & Friday 24th October, Monday 3rd November (school closed to pupils)
- End of term: Friday 19th December at 1:30pm (Early close)



Trauma Perceptive

Practice:

Understanding behaviour and supporting emotional wellbeing.



Embedding phase of Maths Mastery



*St. Thomas of Canterbury
Catholic Primary School*

New Religious Education Directory:

KS1 implementation complete. Now focusing on KS2.



Active Learning:

Forest School





Implementation of the new Religious Education Directory

To know You more clearly

The Religious Education Directory
for Catholic Schools, Academies and Colleges
in England and Wales



Religious
Education
Directory

We have begun to deliver lessons from the programme of study featured in the new Religious Education Directory (RED) entitled *To Know You More Clearly*. This new RE curriculum was launched in EYFS & KS1 last academic year and will be introduced to KS2 from this term.

The six themes, or “branches” of the new curriculum are built around the liturgical calendar. The aim of the updated RED is to enable pupils to become more religiously literate so that they have the knowledge, understanding and skills to reflect spiritually, think ethically and theologically, as well as recognise what religious commitment demands in everyday life.





St. Thomas of Canterbury Catholic Primary School

Ward Avenue, Grays, Essex, RM17 5RW

PARENT VOLUNTEERS

Are you able to listen to children read?

Help with educational visits?

Help with school displays?

Assist with whole school events such as
Cultural Diversity Day or Sports Day?

WE WOULD APPRECIATE YOUR HELP

Please collect a form from the office.



Follow us!

[St Thomas of Canterbury Primary School Grays Facebook Page](#)





Parent Heritage Come and join us!

St. Thomas of Canterbury's Parent Heritage Group

Welcome to St Thomas of
Canterbury's Parent Heritage Group!

Parents and carers will have the opportunity to discuss how our school supports the diverse heritages and multi-cultures within our school. We would like to hear your suggestions about how else we can embrace all aspects of our diverse community.

Everybody welcome!

Dates to be confirmed...



What we aim to achieve:

- Working together as a school/home community to celebrate our diverse cultures across the school.
- Planning cultural days: traditional clothing, traditional music, traditional stories.
- Ways in which the school can support families in celebrating diversity.
- Your ideas for what you would like to see implemented/how you would like to take part and support the children.

**If you
would like
to join our
Parent
Heritage
Group,
please
contact
Mrs Foley,
class RF**



Friends of St Thomas' Come and join us!

Mrs Foley, our Community Involvement Lead, is leading the establishment of the Friends of St. Thomas of Canterbury.

If you would like to be a part of this parent support group, who come together to help raise much needed money for our school, you can contact our email address: friendsofstoc@stthomasofcanterbury.thurrock.sch.uk

We got together to organise the tea, coffee and sweet treat sales after the Nativities, concerts, Easter passion plays and parents evenings. We've held break the rules days (non-uniform days) as well as many raffle sales for Valentines, Mother's Day and Easter. We will be arranging: fetes, discos, and other fundraising events **if we get enough volunteers.**

If the only way you are able to support the school is by purchasing the things we have for sale; raffle tickets, cakes and coffees, this is still really valuable to help us raise funds!

Meet Arley, who you can contact for pre-loved school uniform;

