



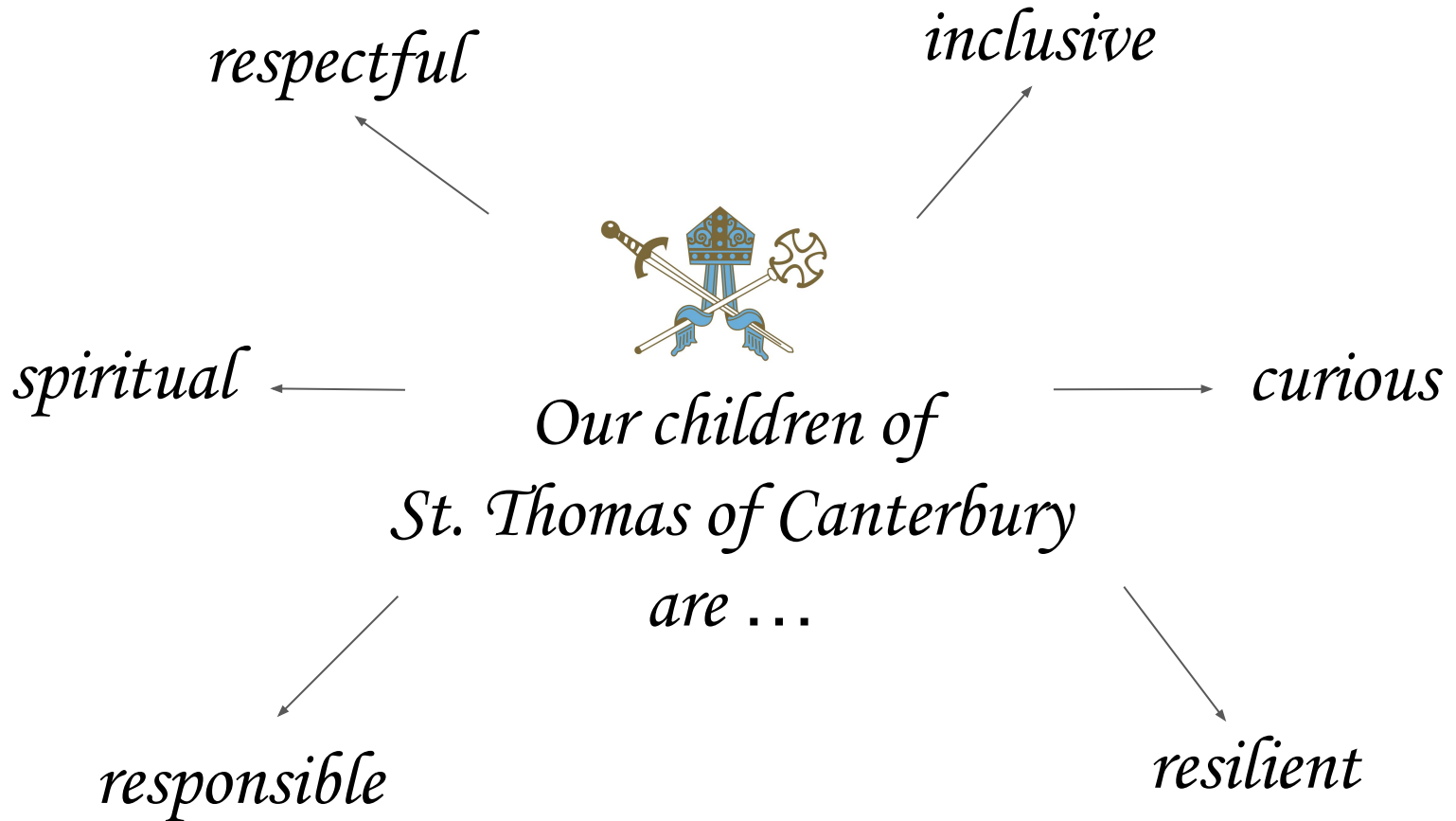
St Thomas of Canterbury Catholic Primary School

*Welcome to the Year 2
Parent Information Meeting*

11th January 2024



Our School Values



The Year 2 Team

- ❑ **Mrs N Foley** - Year Group Leader & Class 2F teacher
- ❑ **Miss K Theakston** - Class 2T teacher
- ❑ **Mrs Field** - Class 2F teacher

- ❑ **Mrs Alexandru (new), Mrs Jachym, Mrs Reid,** - Year 2 support staff

- ❑ **Mrs Sturgess** - Cover Supervisor,
- ❑ **Mrs Perry and Mrs Ogyudire**-SEN support staff

- ❑ **Mrs M Hall** - SENCo





Attendance and Punctuality

Good attendance and punctuality is essential. Pupils cannot achieve their full potential if they do not regularly attend school. Please note that holidays are not permitted in term time.

Unauthorised absence may result in the school referring to the Local Authority for sanctions and/or legal proceedings. This may include issuing each parent/carer with a Penalty Notice.

Please note the following times:

8:40am - Gates open

8:55am - Children are expected to be in the classroom for the register to be taken by 9:00am. If your child arrives after this time, they will be marked as late.

9:15am - Pupils will receive a mark of absence if they do not attend school before this time.



Absence Procedures



If your child is absent for any reason, you should contact the school office via telephone before 9:00am on the first day of absence. You will be expected to provide an explanation for the absence and an estimate of how long the absence will last, e.g. one school day.

Please note that coughs and colds are very common, especially in the winter, and generally do not require your child to be absent from school. Illnesses such as diarrhoea and vomiting only require 48 hours absence from school. If in doubt, please check for guidance on <https://www.nhs.uk/live-well/is-my-child-too-ill-for-school/> or contact the school office.





Uniform

At St. Thomas of Canterbury, we are proud that our uniform fosters a sense of belonging within our school community.

We have listened to parental views and updated our uniform policy which has now been ratified by Our Governors- see the changes on the next slides.


Information about school uniform can be found on the school website:

<https://www.stthomasofcanterbury.thurrock.sch.uk/uniform/>

Our uniform is available to purchase from Uniformwise in Stanford-Le-Hope:

<https://www.uniformwise.co.uk/> Please ensure that all uniform items are clearly marked with your child's name.





The best option is to speak with the class teacher. From 8:40am staff are working with children so please speak to the teacher at the end of the school day.

Email or call the school office to request to meet with a member of staff.

admin@stthomasofcanterbury.thurrock.sch.uk



How can parents communicate with the school?

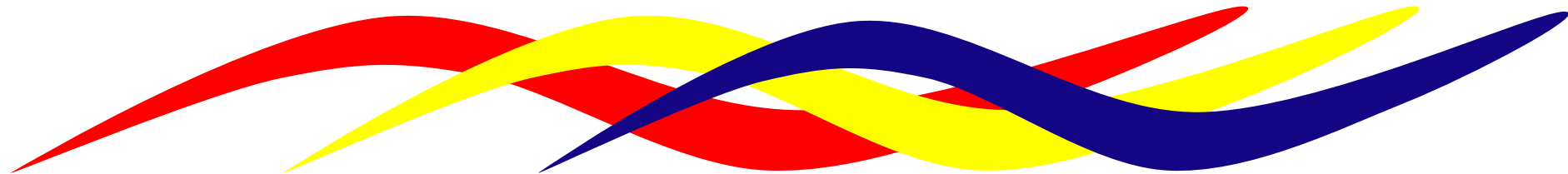
Email the class teacher.

Call the school office who may be able to answer your question immediately or pass a message to staff.
01375 375826

Speak with the staff on the school gate at the beginning or the end of the day.

Send in a note with your child.

Talk with Mrs Poulteney or any of our senior leaders:
Mrs Coppin
Mrs Smith
Ms McAnally





Uniform - updates

	BOYS	GIRLS
<p>WINTER (Compulsory from October half term)</p>	<ul style="list-style-type: none"> • White Shirt • School Tie (Preferably a non-elastic tie in KS2) • Grey V necked jumper preferably with the school logo • Grey trousers / shorts • Grey socks • Black shoes (not trainers) • Navy or black school coat • St Thomas' School blazer (optional) 	<ul style="list-style-type: none"> • White shirt/ blouse • School Tie (Preferably a non-elastic tie in KS2) • Grey V necked cardigan preferably with the school logo • Grey skirt or pinafore • White or Grey socks / Grey tights • Black shoes (not boots or trainers) • Navy or black school coat • St Thomas' School blazer (optional)
<p>St Thomas' book bag. <input type="checkbox"/></p> <p>Small blue/black bag if children need to bring a change of clothes for clubs.</p>		
<p>SUMMER (Compulsory from May half term)</p>	<ul style="list-style-type: none"> • White polo shirt with school logo (Preferred) or plain white polo shirt • Grey shorts • Grey V necked jumper preferably with the school logo • Grey socks • Black shoes (not trainers) 	<ul style="list-style-type: none"> • Pink gingham dresses • Neutral coloured (e.g. black, white) cycling shorts under dresses (Optional) • White blouse with revered collar/ grey skirt (Year 5 & 6 girls only) • Grey V necked cardigan, preferably with the school logo • White socks • Black shoes

Jumpers, cardigans and polo shirts with the school logo are preferred.

Grey socks are permitted for girls in the winter

Summer uniform- Year 5&6 girls- white blouse with a revered collar and grey skirt.



PE kit - updates



Year 2's PE day is Thursday.

Your child should wear their PE kit to school on their PE day.



Children should wear their PE shorts and T-Shirt underneath their tracksuit as they will only need to wear the T-shirt with their shorts for indoor PE lessons.

Please note that in the winter months, the St. Thomas of Canterbury tracksuit should be worn.

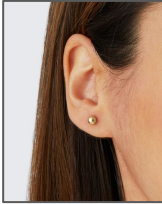
Children should wear black plimsolls or black trainers on their PE days.



Hair/Accessories - Updates

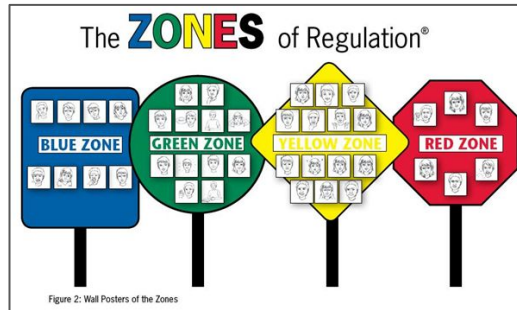


- Hair accessories must be kept to a minimum and should be in school colours. Red, white, blue in winter. Pink, white or blue in summer.
- Hair braids should be natural hair colours.
- One small stud earring per ear. (Children must not wear earrings on PE days.)



Alterations to the school uniform policy due to religious or medical reasons to be agreed by the Headteacher.

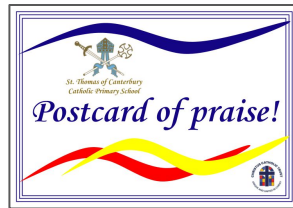
We have updated our behaviour policy at St Thomas's to better equip our children in understanding and articulating their feelings and emotions by using the Zones of Regulation.



We believe in a preventative approach, where children are treated with respect and where sanctions, when applied, are consistent.

Rewards for good behaviour at St Thomas's include:

- Verbal praise
- Communicating praise to parents
- Housepoints and stickers
- Certificates linked to our school values
- Prize ceremonies and special assemblies



Religious Education

2 RE lessons per week

Spring term - themes and topics

- Local Church - Community
- Eucharist - Relating
- Lent/Easter - Giving



Weekly Assembly, Celebration of the Word and Hymn Practice



SCHOOL MISSION STATEMENT



At St Thomas' we are learning to follow Jesus, showing respect and consideration for ourselves and others.

We all have the opportunity to learn and work to the best of our ability in a safe and loving environment.



Fr Stephen and Deacon Matus celebrate Mass regularly at school/church for whole school/year groups.

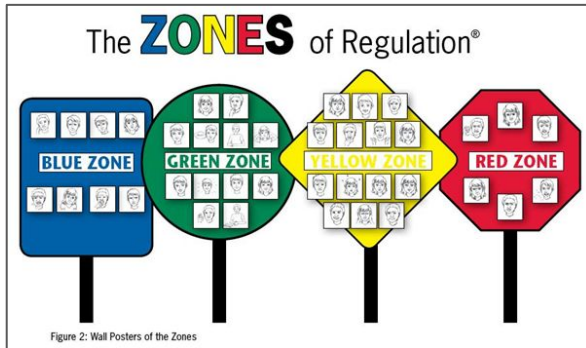


Deacon Matus supports learning in RE



We implement our PSHE curriculum through the use of the resource Life to the Full. This allows us to cover all the statutory requirements of Relationships and Health Education based on the structure of the Model Primary RSE Curriculum from the Catholic Education Service.

We supplement this with our own planning to cover elements of 'Living in the Wider World', such as: Digital Literacy, Shared Responsibility, British Values and Aspirations. Alongside this, we also ensure we cover important events throughout the year such as: Anti-Bullying Week, Black History Month, Children's Mental Health Week and Remembrance Day.



In each classroom, we have the Zones of Regulation to aid the children with understanding their emotions and feelings and knowing how to deal with them.



Phonics or SATs or MTC

SAT's

The Government have changed the SAT's reporting requirements this year. We will be doing some Mock SAT's at the end of January which we will keep you informed of at your parents evening meetings.

We will then conduct the new assessment papers during the Summer term in order to support the measurement of pupil achievement and identify where children need additional support as the transition into KS2. We no longer have to complete these in set weeks of the year and we will also not be reporting the results to the local authorities.

We will be sending home copies of tests, just like before Christmas so that you are kept informed of how your child is progressing and to improve communication during term time.

Phonics screening

For the small number of children who did not pass the Phonics screening test, these children will be assessed again from 10th -14th June. Please support your child at home to read daily and learn their sounds in preparation.





Our learning this term

Throughout the Spring term, this is what we will be covering:

English: Our new books are Lila and the secret of rain and One night far from here.

Maths: Money, multiplication and division, length and height, mass, capacity and temperature.

Science: Animals including humans





Our learning this term

Art & Design: Painting and mixed media

Computing: We will be learning how to use Scratch junior and algorithms

Design & Technology: Spring 2 we will be looking at designing a chair for baby bear





Our learning this term

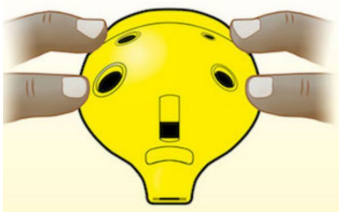
Geography: In Geography we will begin learning about Australia

History: During Spring 2 we will be learning about Florence Nightingale.



Our learning this term

Music: They will continue their learning with Dr Shore. Children will be learning to play the ocarina

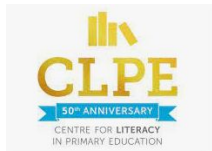


PE: The children will be focusing on Gymnastics



Reading

Becoming a fluent, skilled and attentive reader starts at the earliest stages. Therefore, making sure that children become engaged with reading at the earliest opportunity is one of the most important ways to make a difference to their life chances.



Books are changed every 3-5 days. Please listen to your child read every day and leave a comment in his/her reading record.



Homework



Homework was previously assigned via SeeSaw and a hardcopy of the sheet was given out on a Friday to complete and return by Wednesday. This will continue to be the case even if we choose to use Google classroom going forward.

Spellings are taught on a Monday and then are sent home for the children to practice daily until their test on the following Monday. The words sent home are what moderators will expect to see the children using daily in their writing to be at age related expectations.

If your child has not managed to secure these spelling each week, please speak to your class teacher and they can give you a copy of spellings we covered so far.





Educational Visits

On Friday 16th February we have booked in Maldon Promenade zoo to come in for an animal experience. This is to support the Science learning taking place in Spring term on living things and their habitats and animal life cycles.

On Tuesday 19th March we have arranged for a drama workshop to help bring to life the story of Florence Nightingale which is our History focus topic.

A letter will be going out regarding the above in the next week.

Please note that if we do not receive sufficient contributions towards educational visits, then they may have to be cancelled. Payments are made via Arbor.

Consent forms must be returned by every child before we can allow them to participate. Verbal consent is **not** accepted for children to take part in any activity.





After school clubs

We are delighted to offer an increased range of after-school clubs this academic year, details of which are sent out at the beginning of each term.

Parents/carers can also access Jules et Lis before and after school clubs, run by an external provider. Details can be found on <https://julesetlis.co.uk/>





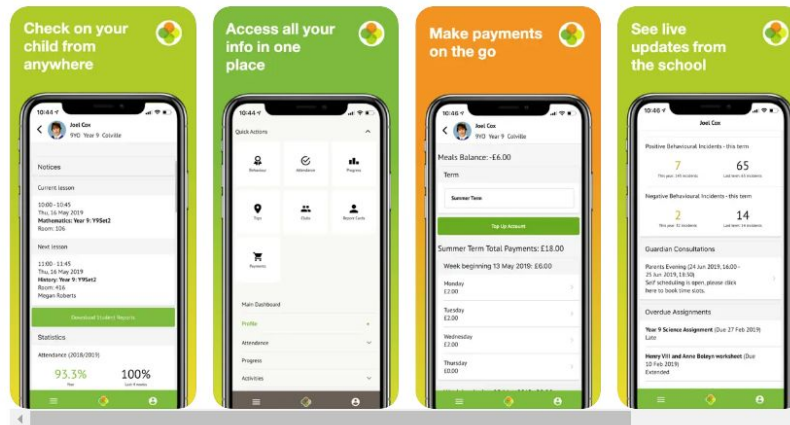
Arbor

All correspondence, payments, club bookings and consent for trips will be sent electronically through Arbor.



Arbor 12+
Parent & Guardian Portal
Arbor Education Partners
Designed for iPhone
#17 in Education
★ ★ ★ ★ 1.4 + 761 Ratings
Free

iPhone Screenshots



Dates for your diary

- 12-01-24 Make the rules day-children donate 50p for every school rule broken
- 31-01-24 2S Class Liturgy (parents can attend)
- 13-02-24 Parents evening
- 15-02-24 Parents evening
- 16-02-24 Educational visit from the zoo
- 19-02-24 Half term holiday until 26-02-24
- 08-03-24 TBC Mothers day gift sales
- 19-03-24 Educational visit Florence Nightingale exper
- 28-03-24 Half term holiday until 15-04-24



Come and join us!

St. Thomas of Canterbury's Parent Heritage Group



Welcome to St Thomas of Canterbury's Parent Heritage Group!

Parents and carers will have the opportunity to discuss how our school supports the diverse heritages and multi-cultures within our school. We would like to hear your suggestions about how else we can embrace all aspects of our diverse community.

Everybody welcome!

Dates to be confirmed...

What we aim to achieve:

- Working together as a school/home community to celebrate our diverse cultures across the school.
- Planning cultural days: traditional clothing, traditional music, traditional stories.
- Ways in which the school can support families in celebrating diversity.
- Your ideas for what you would like to see implemented/how you would like to take part and support the children.

If you would like to join our Parent Heritage Group - leave your email address and telephone number with the office and Miss Paul will contact you.

Mrs Foley, our Community Involvement Lead is leading the establishment of the Friends of St. Thomas of Canterbury.

If you would like to be a part of this parent support group, who come together to help raise much needed money for our school, you can contact our email address:

friendsofstoc@stthomasofcanterbury.thurrock.sch.uk

We got together to organise the tea, coffee, uniform and sweet treat sales after the recent Nativities and concerts. We will be arranging; fete's, discos, non-uniform days and other fundraising events. We look forward to seeing you there.

Please speak to one of the FOST parent support group after this meeting.

