



# Science

## Animals Including Humans

# Digestive System Parts

A stylized, cartoonish illustration of the human digestive system. The background is a warm orange color. The digestive organs are depicted in various shades of red, orange, and brown. The esophagus is a long, straight tube running down the center. The stomach is a large, rounded organ on the left side. The liver is a large, dark brown organ on the right side. The pancreas is a small, light brown organ located behind the stomach. The small intestine is a long, coiled tube that fills the lower half of the image. The large intestine is a thick, brown tube that runs along the bottom and sides. The rectum and sigmoid colon are visible at the bottom right. The text "Digestive System Parts" is written in a bold, white, sans-serif font with a red outline, centered in the upper half of the image. A small "twinkl" logo is visible in the bottom right corner.

# Aim

- I can identify and name parts of the human digestive system.

# Success Criteria

- I can name parts of the digestive system.
- I can identify parts of the digestive system.
- I can construct the digestive system.

# Digestive System



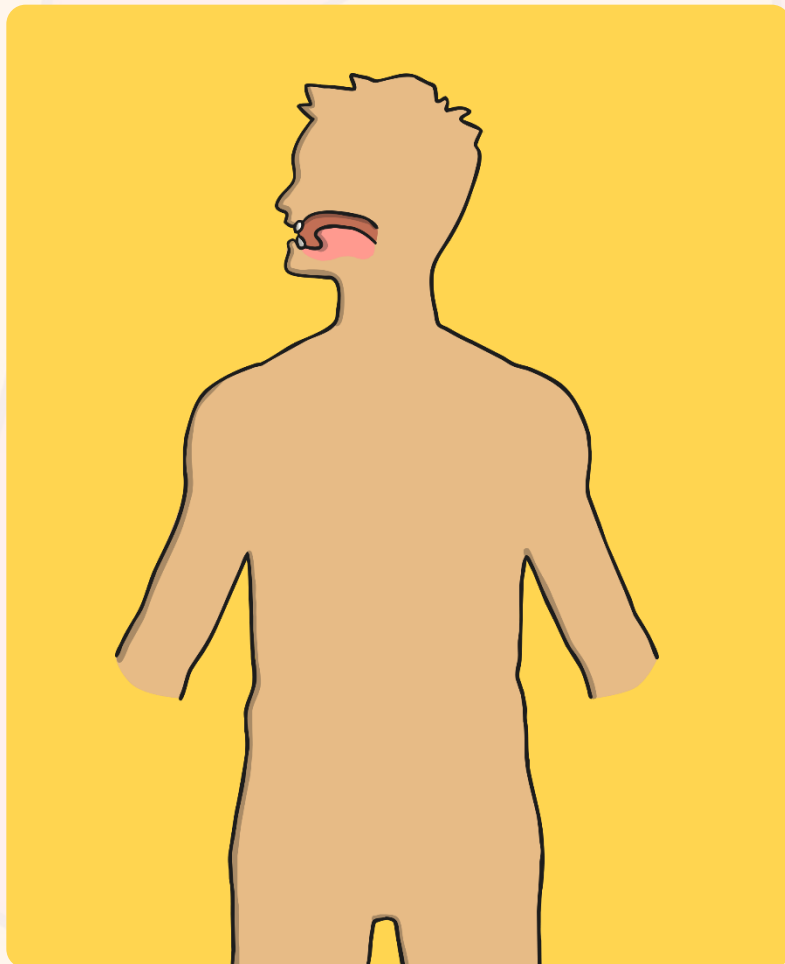
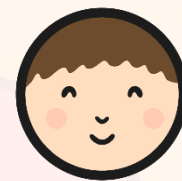
Humans digest food. They have a digestive system that allows them to do this.

What do you think digest/digestive system mean?

Click here for  
a definition of  
**digest**

Click here for  
a definition of  
**digestive  
system**

# Digestive System Parts



You are now going to draw and label the body parts that you think are part of the digestive system!

Think about the following to help you:

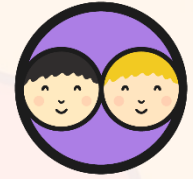
How do humans digest food?

How does food travel through the body?

What parts of the body are involved?

(Hint: it's not just the ones on the outside that you can see!)

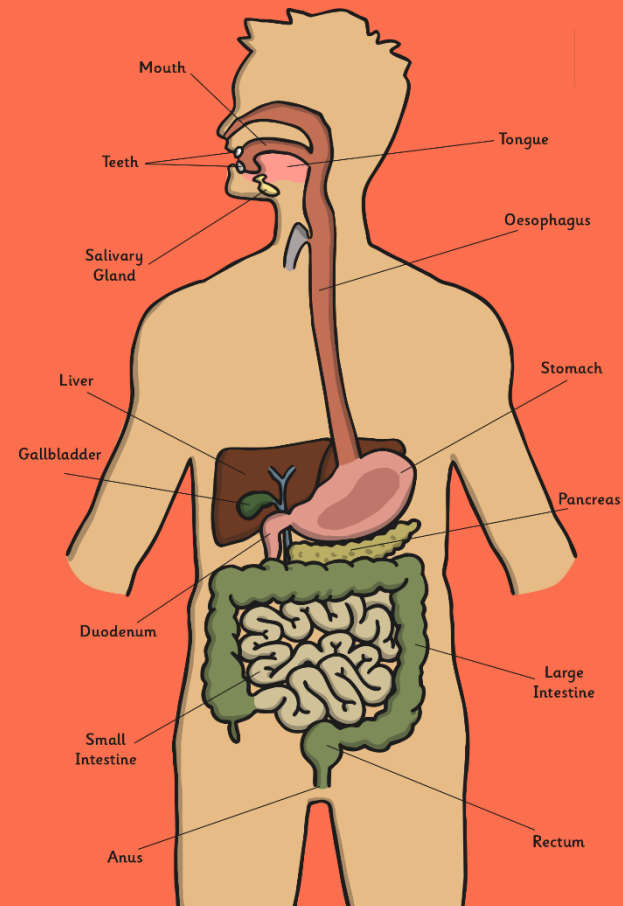
# Digestive System Parts



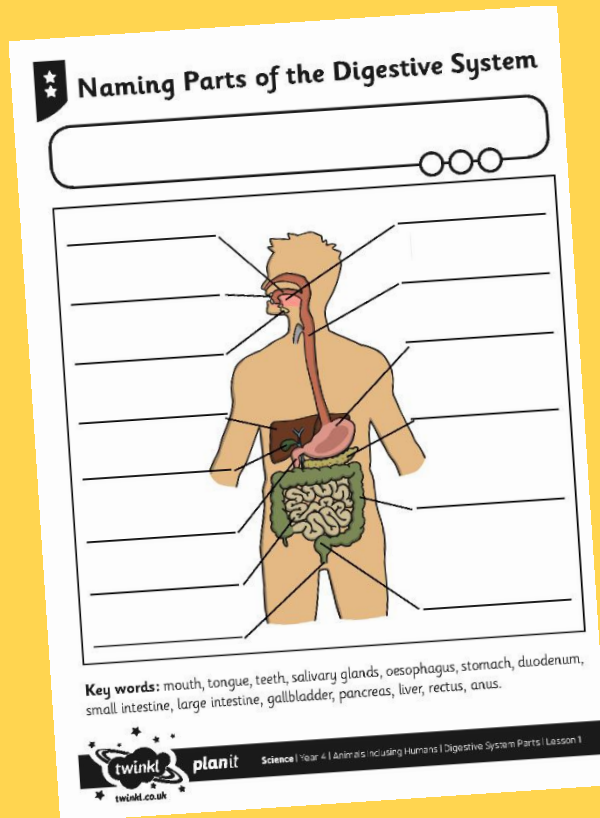
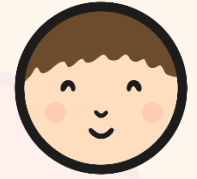
Swap your sheet with your partner.

Peer mark their work:

- Tick any body parts that were correct and cross any that were incorrect.
- Swap back with your partner.
- Were there any obvious body parts you missed out?
- Were there any body parts that you were surprised by?



# Naming Parts of the Digestive System



Can you name all the parts of the digestive system?

## Task:

You will be given a sheet with key words to name and label the different parts of the digestive system.

When you have finished stick it next to your drawing of the digestive system from earlier in the lesson.

# Aim



- I can identify and name parts of the human digestive system.

# Success Criteria

- I can name parts of the digestive system.
- I can identify parts of the digestive system.
- I can construct the digestive system.

