

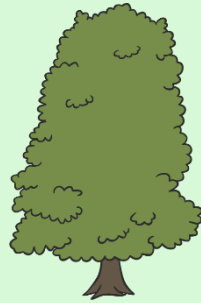


twinkl

# Deciduous and Evergreen Trees

A task setting PowerPoint Pack about tree identification.

Photo courtesy of erwlas (@flickr.com) - granted under creative commons licence - attribution



**LO:** To find and name a variety of deciduous and evergreen trees.

- To identify the basic structure of a tree.
- To group trees according to their qualities.
- To know what is meant by 'deciduous' and 'evergreen'.





## Starter

There are two types of tree,  
**deciduous** and **evergreen**.

What do you think makes a tree an evergreen? (The clue is in the name!)

**evergreen**

## Starter

An **evergreen** tree **keeps** its green leaves all year round.



Photo courtesy of tuchodi (@flickr.com) - granted under creative commons licence - attribution

## Starter

A **deciduous** tree loses its leaves each year.



In which season does a tree usually start to lose its leaves?



## Starter



In **autumn**, the leaves on deciduous tree usually change colour and fall off.

In **winter**, deciduous trees usually have no leaves on their branches.



The background of the slide is a cartoon illustration of a landscape. It features a bright blue sky at the top, a green field at the bottom, and several stylized trees. On the left, there is a smaller tree with a brown trunk and green foliage. On the right, there is a larger, more detailed tree with a thick brown trunk and green leaves. The central part of the slide is a large, light green rectangular area.

Starter

**Lets go on a tree hunt!**



## Starter

There are lots of different types of deciduous and evergreen trees growing in this country.

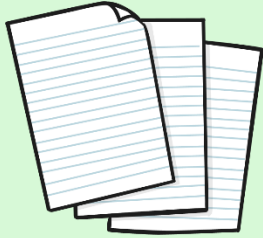
We are going to hunt for trees in the area around us.

We will try to name the trees by looking carefully either at the leaves, nuts or fruits they have produced.



## Starter

### You will need:



A tree identification sheet

A magnifying glass

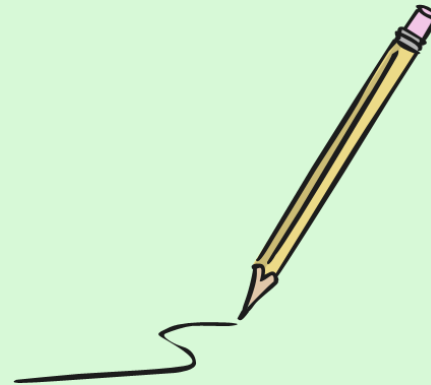


A leaf collection pouch



A pencil

A clipboard



## Activity

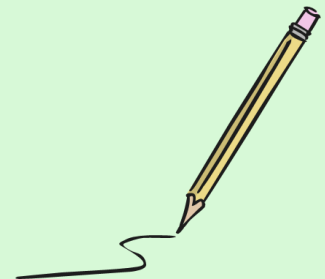
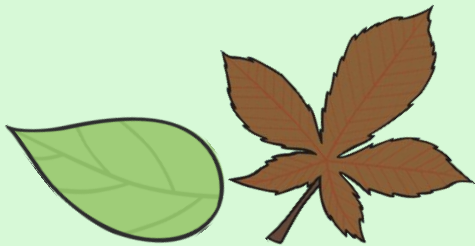


When you find a new tree, try to find one of its leaves on the floor.

Look at the leaf carefully using a magnifying glass and find the leaf on the **tree identification sheet**.

Tick the tree you have found and put its leaf in your **leaf collection pouch**.

If you find a leaf that you can't identify, **collect it and bring it back to school!**



## Discussion



Which tree did you  
see the most?



## Discussion



Which tree had the  
smallest leaf?

## Discussion



Did you find any leaves  
that were **not** on the  
identification sheet?

## Plenary

Three trees on your identification sheet are **evergreen** and the rest are **deciduous**.

Evergreen leaves are:

**Small**

**Narrow**

**Thick**

**Waxy**

Can you decide which of the leaves on the sheet might be evergreen?



## Plenary

yew



holly



larch



...are evergreen!



THE END

twinkl